

Long-term capacity development of the Bangkok Metropolitan Administration (BMA) on climate change



November 4th, 2021

Online Workshop

“The challenging issues of Environment/Climate Change Institution and Policy under SDGs Regime”
1



Wongkot Wongsapai

Head: Energy Technology for Environment Research Center (ETE),
Chiang Mai University, Thailand wongkot@eng.cmu.ac.th

BMA's Climate Change Master Plan (CCMP)

BMA's CCMP Key Timeline

2012-13



CCMP # 1 (2013-2023)

- First Long term Climate Change Master Plan in Thailand's Major City level.
- 2013 –Thailand first NAMA year
- Supported by JICA, administrated by BMA.
- Energy, Transport, Waste, Adaptation play as major sectors

2019

1st Stocktaking process

- Emitted 42.75 MtCO₂ (3.69 MtCO₂ lower than target)

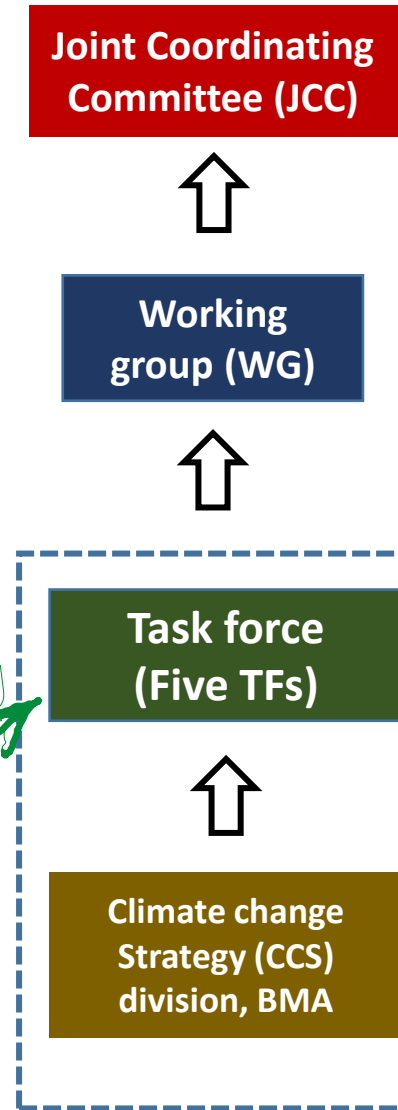
2020-21



CCMP#2 (2021-2030)

- Second plan (same period with NDC).
- Bangkok city emitted around 16% of the country (2016 data)
- More challenged mitigation target with 19% reduction target compared with BAU, by 2030.
- **5 sectors**: Energy, Transport, Waste, Green urban planning, Adaptation

BMA's CCMP Working Framework



Capacity building

- Key Topics**
- Mitigation (RE, EE, WM transport, etc.)
 - Adaptation
 - MRV
 - Policy analysis
- Methodology**
- Seminars
 - Workshops
 - Trainings
 - Site visits

Questionnaire on Climate Change Master Plan (CCMP)

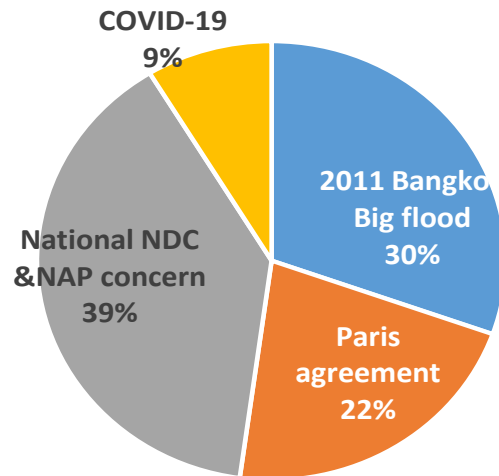
Questionnaire on CCMP (Oct 2021)

Aim: To understand the key stakeholders' views about the BMA's long-term capacity development to tackle climate change problems.

Target:

- BMA's official (CCS & All task force persons)
- Local experts

Q3 Most influential events have the most significant effect on BMA Capacity building

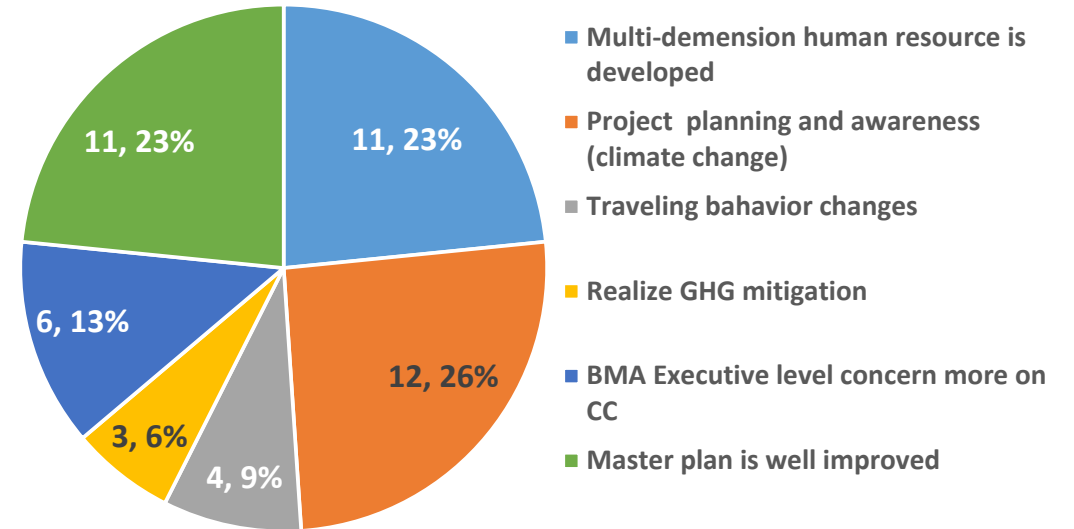


Q14 What would be needed for stimulating BMA cap. development?

75% Budget & Executive level policy
25% Raising CC awareness to BMA agencies/public

Q9

What you've got and realized from JICA's support on CCMP project



Q10

Need for BMA future capacity building

