



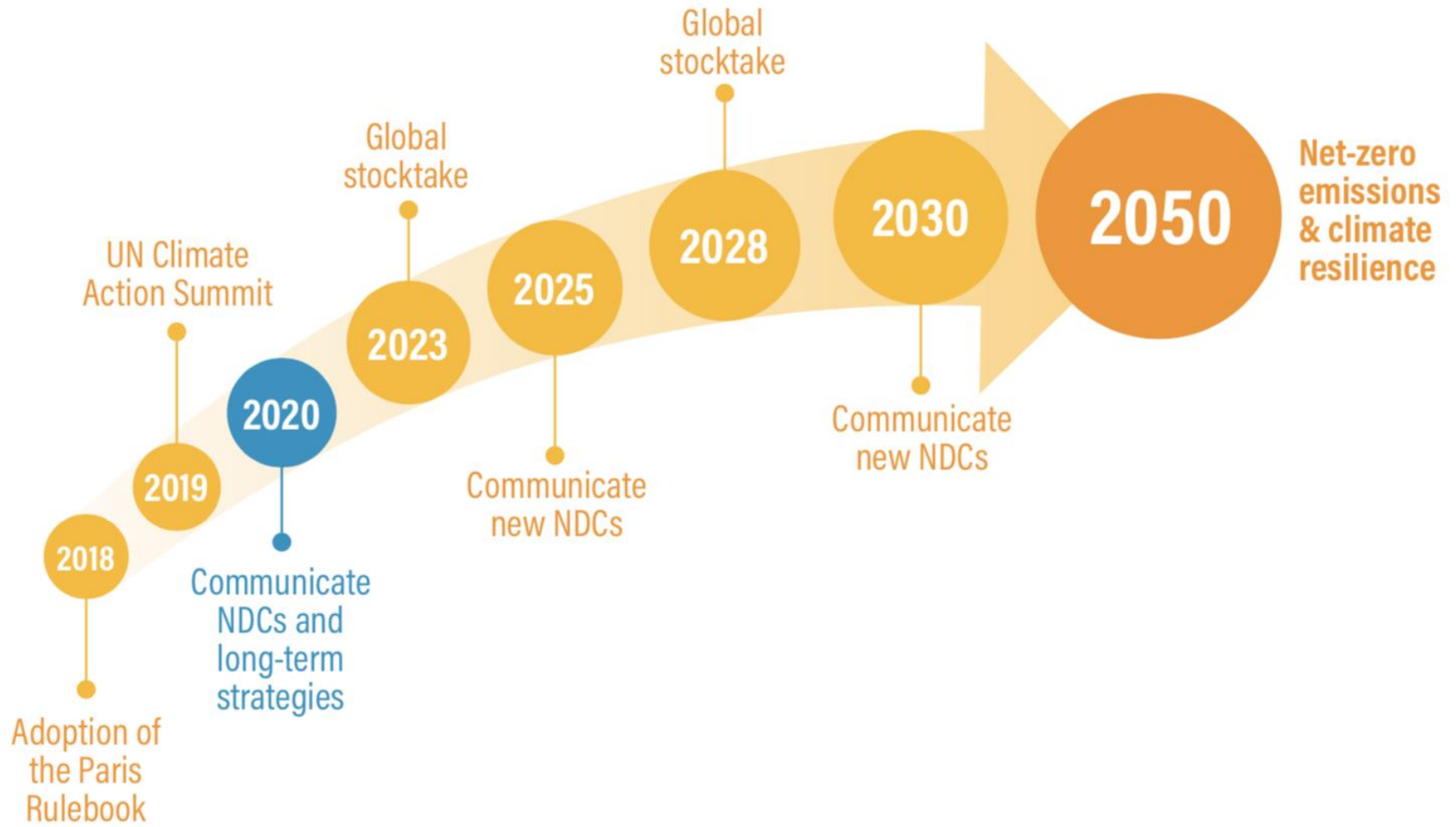
WORLD  
RESOURCES  
INSTITUTE

# ENHANCING NATIONALLY DETERMINED CONTRIBUTIONS

Opportunities in power, transport, forests, and agriculture

---

# The Arc of Ambition from Paris Goes Through 2020



# Why enhance NDCs?



# Why enhance NDCs?



Take advantage of major shifts in technology and costs



Seize opportunities for economic growth and development



Avoid lock-in effects and increased transition costs



Send signals to attract climate finance and investment



Build on action by non-state actors, including cities and business



Achieve synergies with the SDGs (health, jobs, food, etc.)



Build broader buy-in from ministries and stakeholders



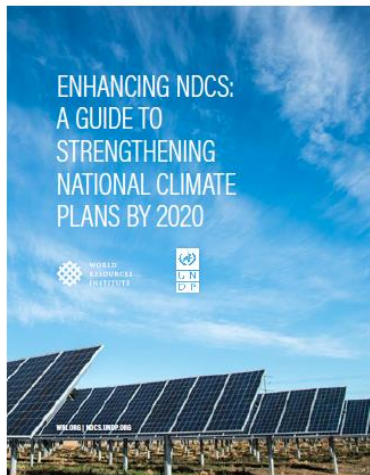
Bolster implementation of commitments in existing NDCs



Align with carbon neutrality and long-term strategies

# NDC enhancement guidance series

## ENHANCING NDCs



**Power**



**Forests**



**Ocean**



**Transportation**

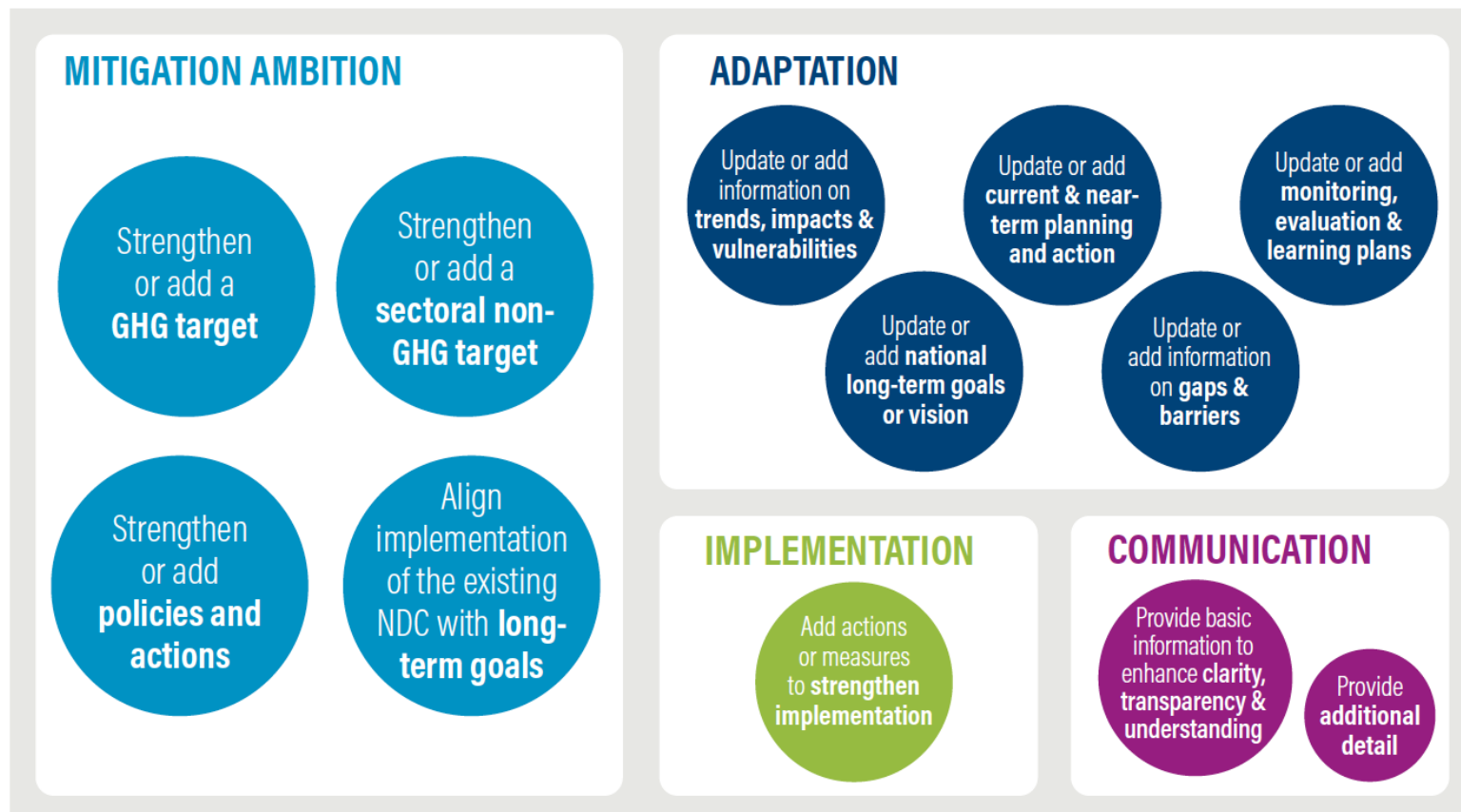


**Agriculture**



**Short-lived climate  
pollutants**

# Types of NDC enhancement



# Establishing a Process for NDC Enhancement

1

## SECURE HIGH-LEVEL BUY-IN

- Prime minister's or president's office
- Key ministries

2

## ESTABLISH INSTITUTIONAL ARRANGEMENTS

- Lead institution
- Intra-governmental coordination
- Alignment with development objectives

3

## PLAN FOR STAKEHOLDER ENGAGEMENT

- Civil society
- Academia
- Private sector
- Subnational actors
- Trade unions
- Vulnerable populations

4

## DEFINE DOMESTIC OBJECTIVES

- Driving action
- Directing finance
- Generating political support
- Mainstreaming climate change
- Reflecting mitigation and adaptation in key sectors

5

## DESIGN A WORK PLAN

- Roles and responsibilities
- Timeline and milestones
- Monitoring mechanisms

# Designing an Enhanced Mitigation Component

1

## TAKE STOCK OF PROGRESS TO DATE

- GHG, sectoral, and socioeconomic projections
- National policies
- Subnational and non-state commitments
- Development objectives
- Mitigation finance

2

## TAKE STOCK OF LONG-TERM OBJECTIVES

- Global and sectoral mitigation benchmarks
- SDGs and other global frameworks
- Long-term, low-GHG emission development strategies
- Long-term national development plans

3

## IDENTIFY OPTIONS FOR ENHANCEMENT

- Improve Paris alignment
- Reflect new developments, innovation, and best practice
- Maximize benefits
- Fill gaps
- Address finance and implementation issues

4

## AGGREGATE, ITERATE, AND REFINE

- Aggregate impact on GHG emissions other select indicators
- Iterate to refine list of enhancement options

5

## REFLECT ENHANCEMENTS IN NDC

- GHG target
- Sectoral, non-GHG target(s)
- Policies and measures
- Alignment with long-term goals



# Designing an Enhanced Adaptation Component

1

## DETERMINE WHETHER TO INCLUDE ADAPTATION IN THE NDC

Examples of functions served by including adaptation:

- Raising visibility and profile
- Bolstering action and support
- Providing inputs to the global stocktake
- Facilitating learning and understanding

2

## ANALYZE LINKS WITH OTHER PROCESSES

- National adaptation plans
- National communications
- Mitigation planning
- National/sectoral development planning
- SDGs
- Sendai Framework for Disaster Risk Reduction

3

## DETERMINE RELATIONSHIP TO ADAPTATION COMMUNICATION (AC)

- Sole component of AC
- Part of AC
- Not related to AC

4

## IDENTIFY ELEMENTS TO BE INCLUDED AND HOW TO ENHANCE THEM

- See main text for details

5

## INTEGRATE THE SELECTED ELEMENTS INTO THE NDC

- New elements
- Updated elements

Access these resources at  
[wri.org/stepup2020](https://wri.org/stepup2020)