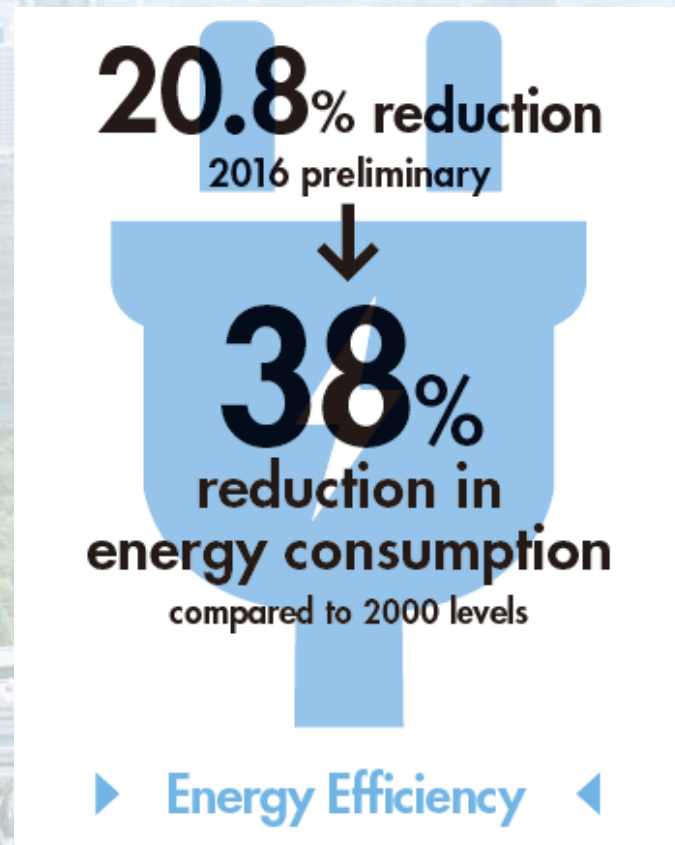
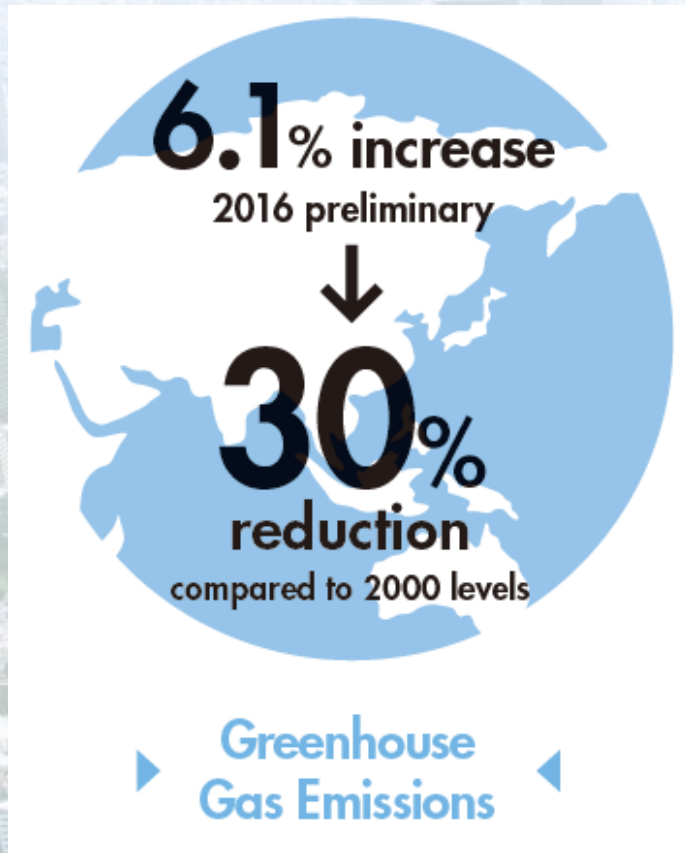


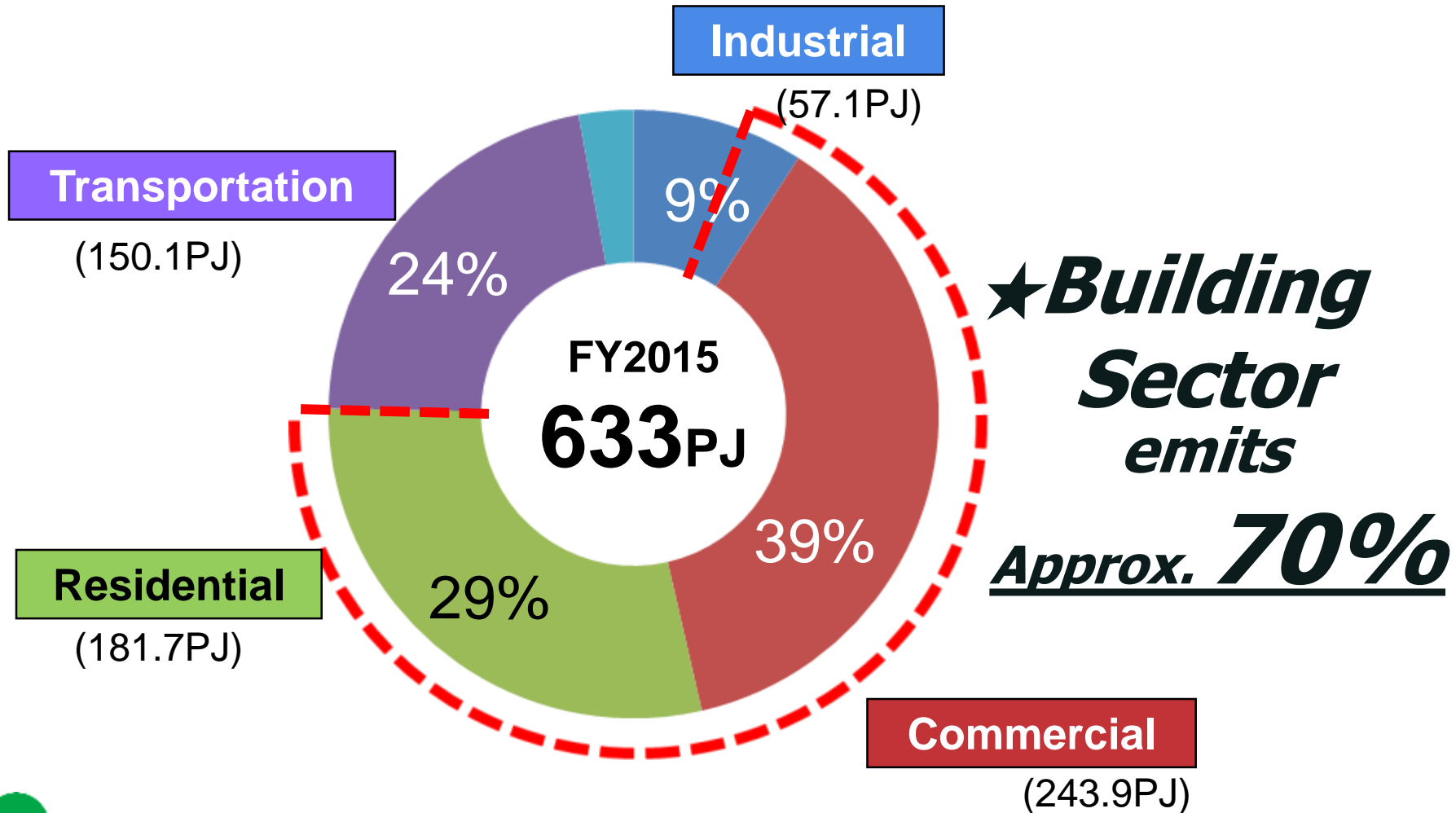


Tokyo Metropolitan Government

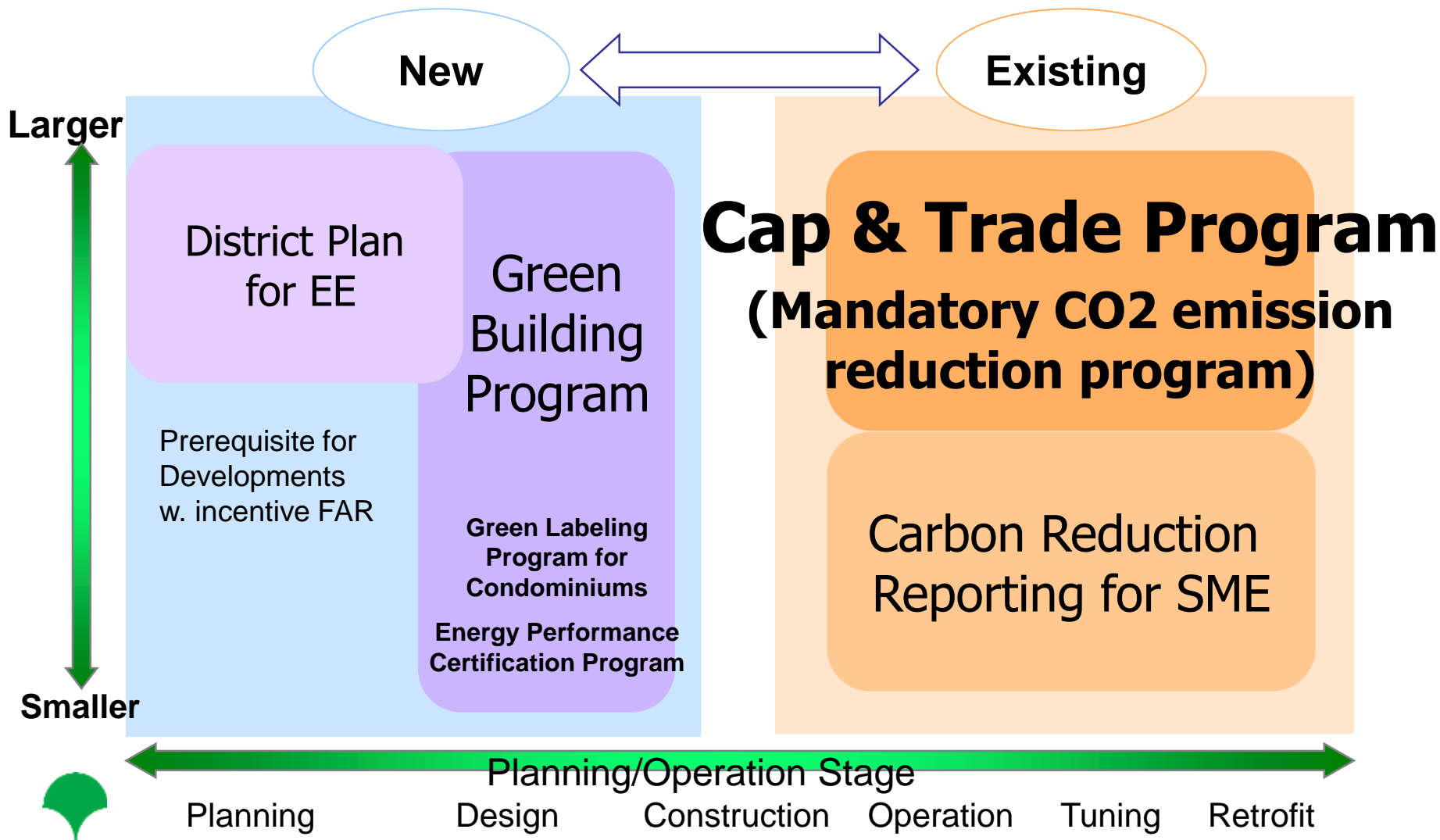
2030 Goals



Energy Consumption in Tokyo (2015)

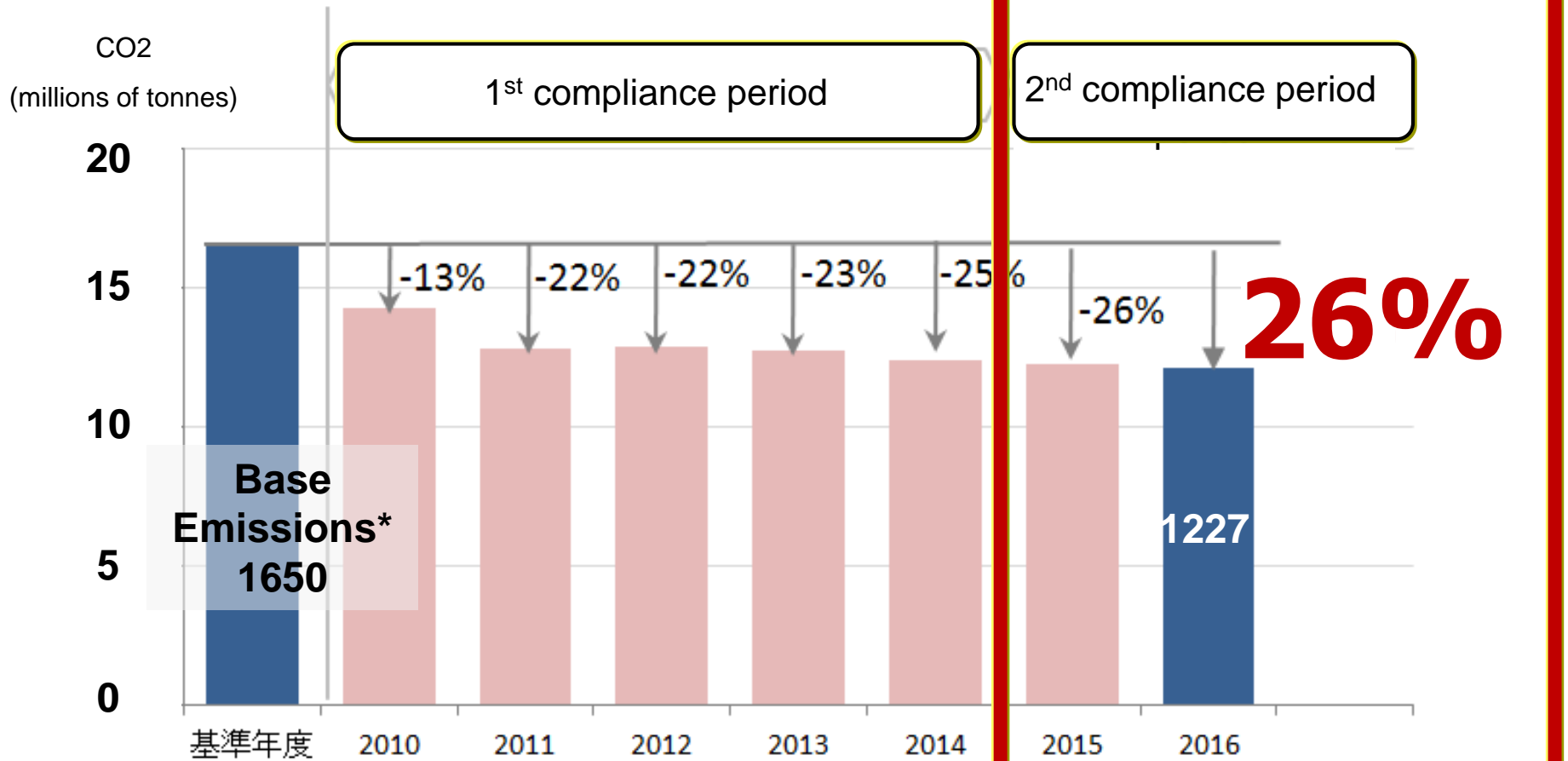


Climate Change Policy Framework for Buildings in Tokyo



Tokyo Cap & Trade Program (3)

Current Result



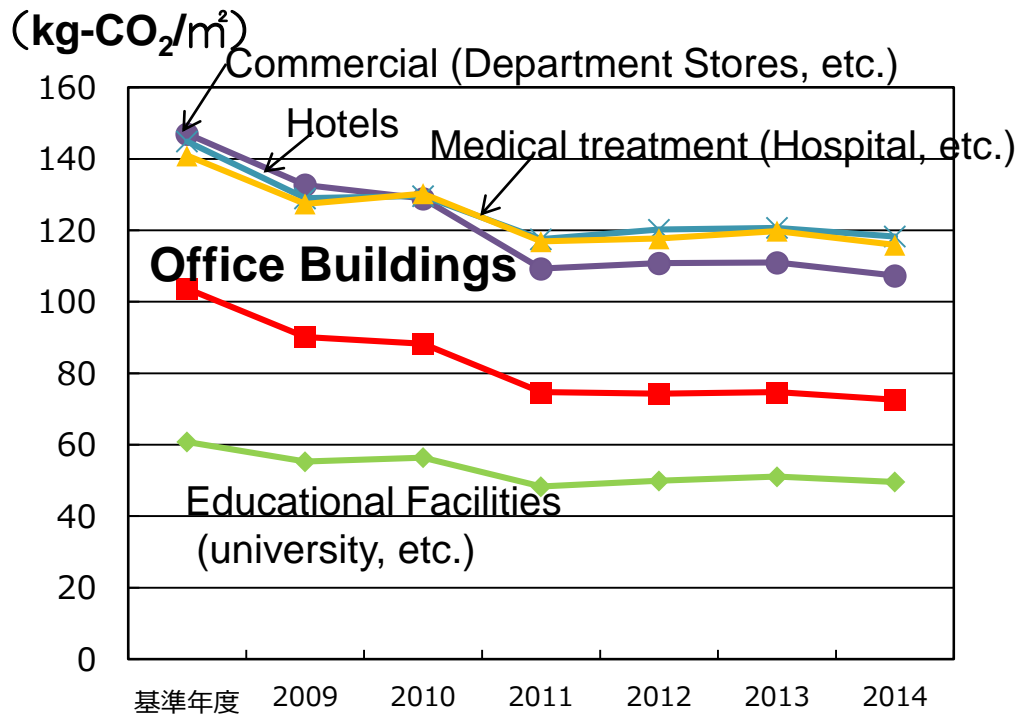
* Base emissions refer to the average value of emissions in three consecutive fiscal years from FY 2002 to FY 2007 selected by businesses.



Transition of Intensity

Tokyo Metropolitan Government

CO2 Emission Intensity of Covered Facilities under Cap-and-Trade Program



Office Building

«average»

(kg-CO₂/m²)

Base year	2009	2010	2011	2012	2013	2014
	90.1	88.3	74.7	74.3	74.7	72.6

30% ↓

«top 15%»

50% ↓

Base year	2009	2010	2011	2012	2013	2014
	66.3	64.8	54.5	53.5	55.6	53.4

- ✓ “Intensity” generally refers to the amount of input required against per unit output. CO2 emission intensity here refers to annual CO2 emission per floor area of 1 m².
- ✓ Approx.60% of CO2 emissions of covered facilities come from electricity consumption.



Tokyo Metropolitan Government

From Low Emission Buildings to *Net Zero Emission Buildings* ~Tokyo Climate Change Strategy~



<http://www.kankyo.metro.tokyo.jp/en/index.html>

Bureau of Environment,
Tokyo Metropolitan Government