



Prevent Global Warming by Environmental
Education and Realization of Recycling-based
Inclusive Society!
Striving for Society Complementing Regional
Resources between Urban and Rural areas

1 Outline of Itabashi City



▶ Population

561,713

▶ Number of households

303,189

▶ Area

32.22km²

«As of January 1, 2018»



A religious ritual "ta-asobi"



"Itabashi-juku", the Shukuba lodging stop on the former Nakasendo Road

2 Tropical Environment Botanical Garden, Ecopolis Center

Tropical Environment
Botanical Garden

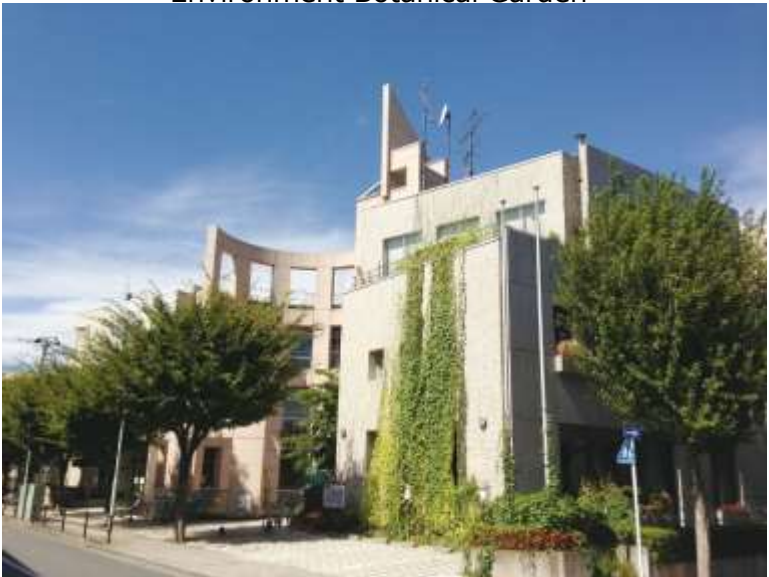


Many glasses attached Entrance of Tropical Environment Botanical Garden



Reproducing the Environment of Tropical Rainforest

Ecopolis Center

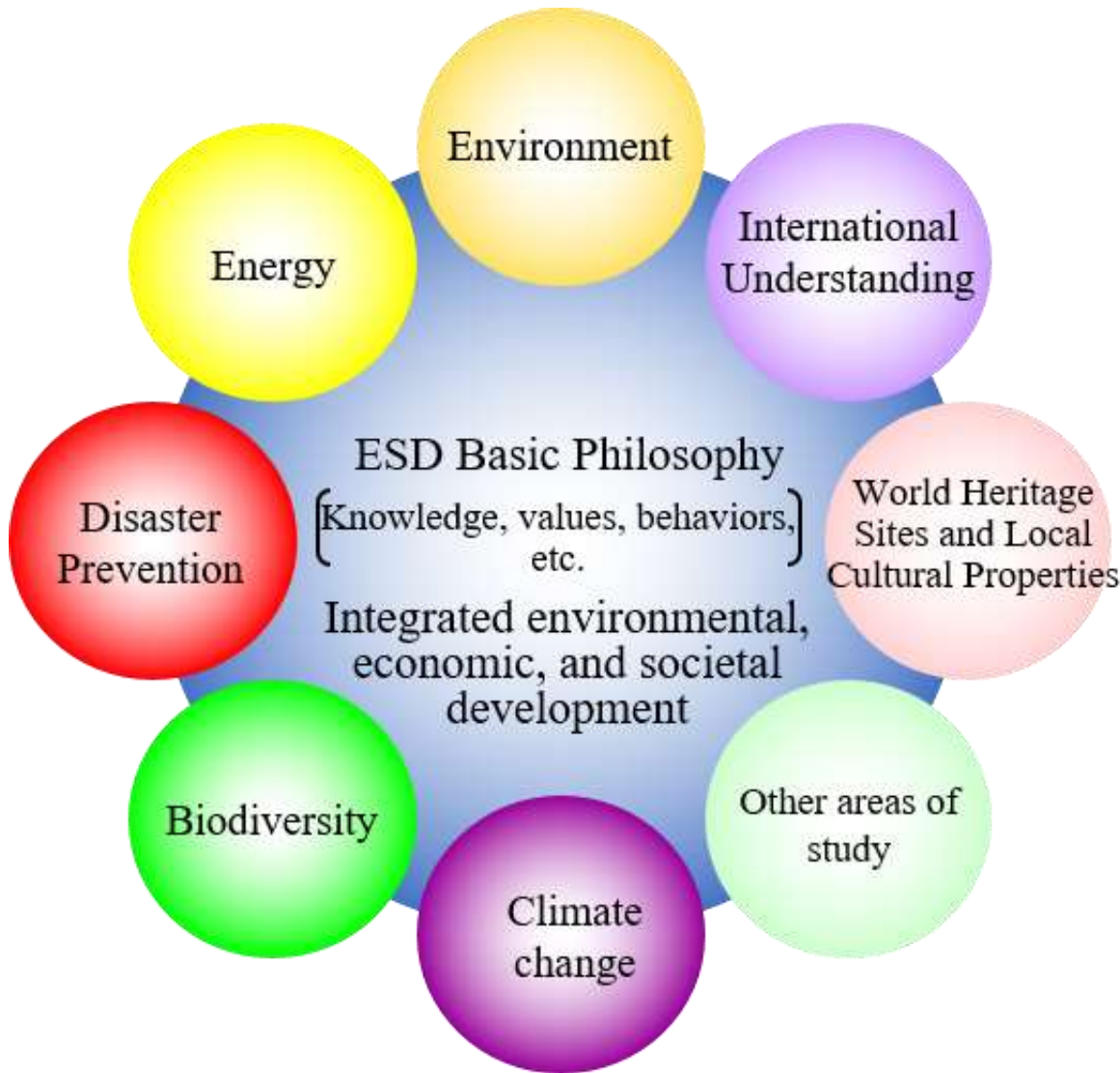


Distinctive Appearance of Ecopolis Center with its Double-Wall



Outdoor Demonstration Class of Environmental Education

3 Education for Sustainable Development(ESD)



Ms. Henrietta Fore, UNICEF Executive Director, visits Akatsuka 2nd Junior High School to see the class on SDGs

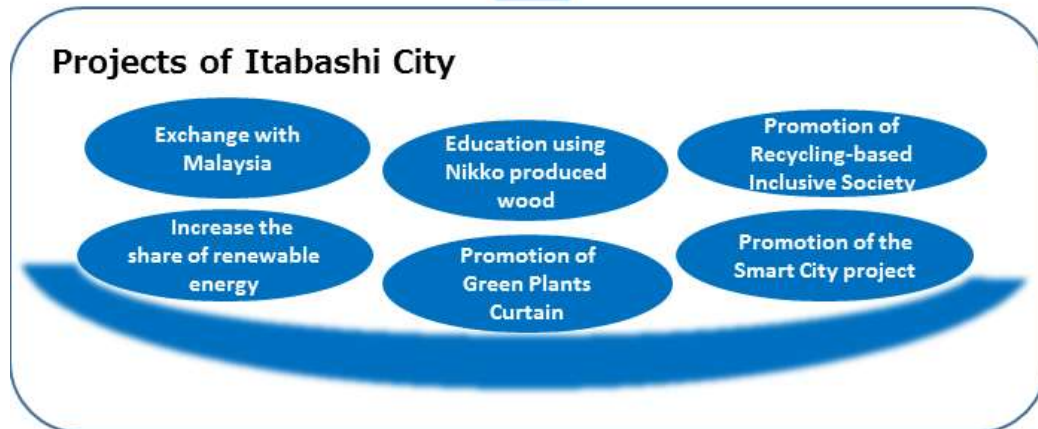


Itabashi Junior High School students are dispatched to Malaysia.

4 持続可能な開発目標 (SDGs)



↑ Contribution for achieving SDGs including climate change measures



A classroom "Media Space" of a Itabashi Junior High School using Nikko-produced wood



Planting of trees at tropical rain forest by Junior High School students (Penang Botanical Garden, Malaysia)

5 Promotion of Recycling-based Inclusive Society

Projects of City facilities



Itabashi City Hall

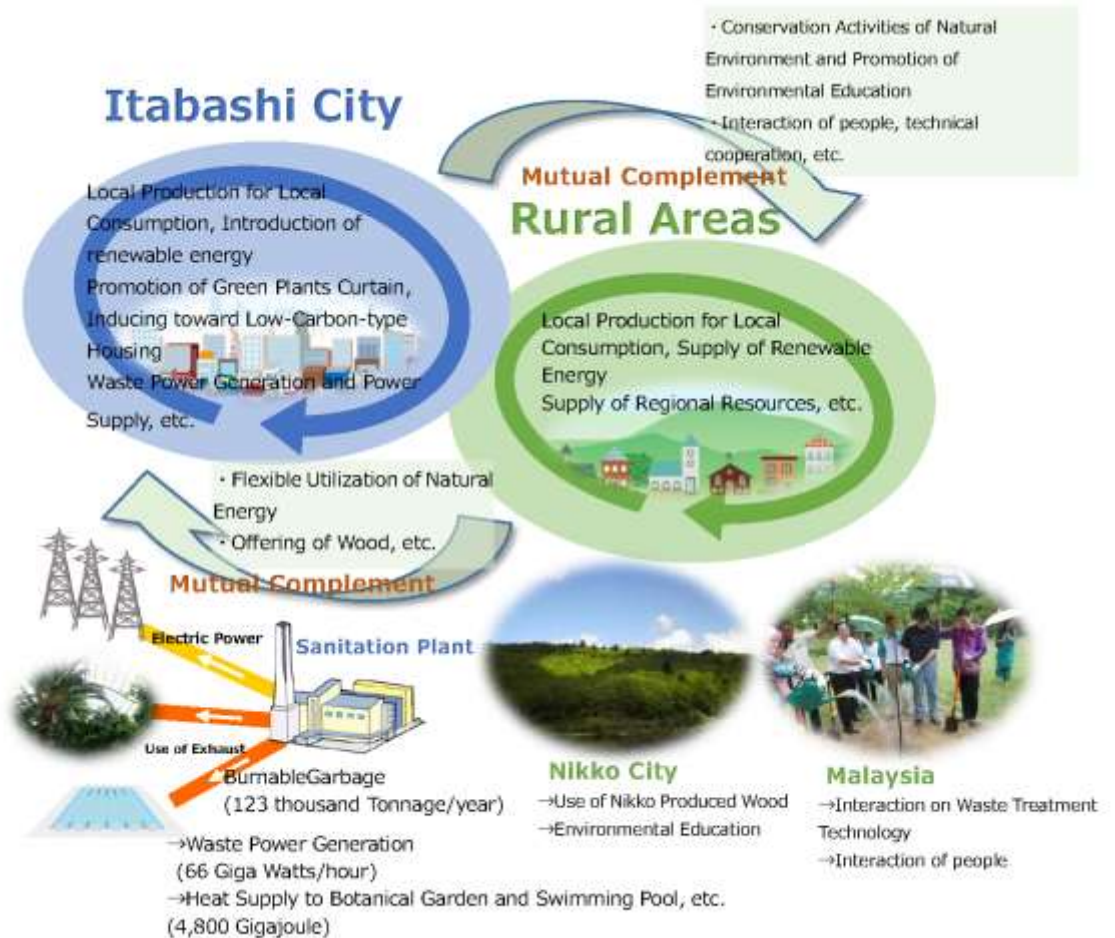
Solar Panels
(Rooftop: 40kw, Exterior walls: 35kw)

Geothermal Heat Project



Azusawa Swimming Pool facilities

Carbon Dioxide Generation half-reduced by Water Heat Source Type Heat Pump (approx. 19.4t-CO₂)



6 Itabashi, its facilities and Event



Sanitation Plant



Tropical Environment Botanical Garden and Small-sized Aquarium



Azusawa Swimming Pool facilities utilizing Geothermal Heat



Itabashi Fireworks Festival

Come to Itabashi when you visit Japan for Tokyo Olympics & Paralympics 2020!