

Regional Circular & Ecological Sphere (Regional CES)

Prof. Kazuhiko Takeuchi
President, IGES

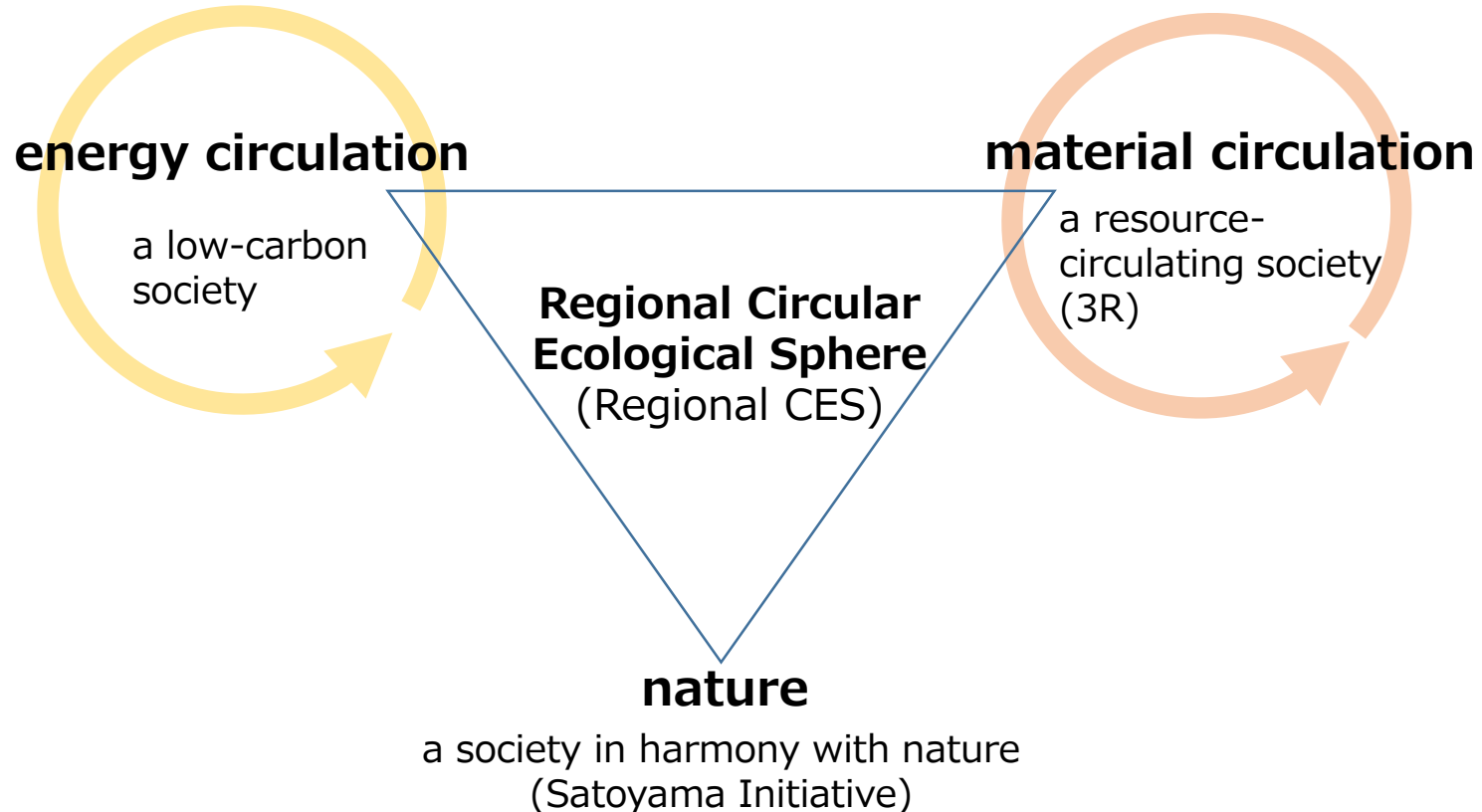
December 10th
Japan Pavillion-COP24

5th Basic Environment Plan of Japan

- Cabinet approval: 17 April 2018
- Plan is revised every 6 years

<Central Environment Council>

An advisory body to the Japanese Minister of the Environment



Background

- **The 2nd Fundamental Plan for Establishing a Sound Material-Cycle Society (2008)**

embraced the 3R principles of material recycling, with the concept of “**regional circular sphere**” (multi-layered, systematic approach, involving local governments)

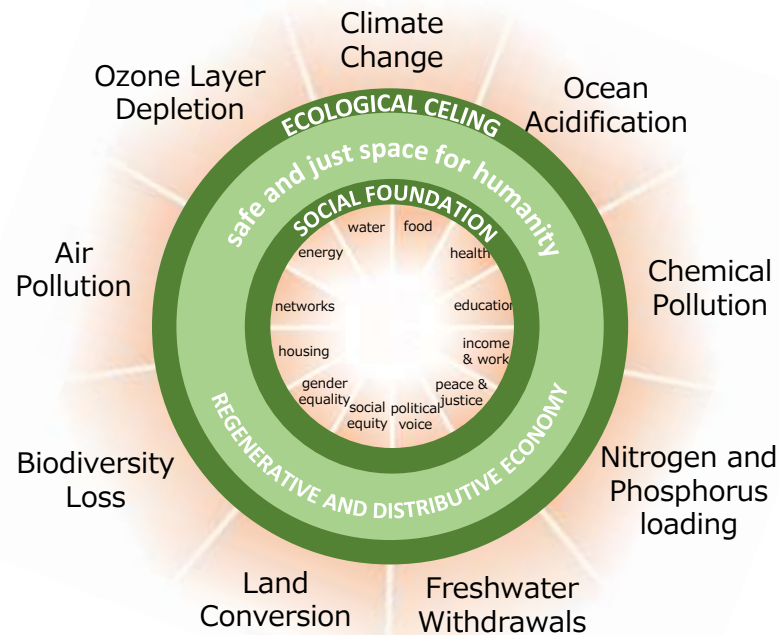
- **The National Biodiversity Strategy (2012-2020) of Japan (2011)**

Recognised the importance of strengthening the urban-rural cooperation and exchange, based on the idea of a “**socio-ecological sphere**” (resilient societies based on sustainable production of natural capital and ecosystem services)



Decarbonised / Low-carbon society

Background



The Doughnut of social and planetary boundaries (Kate Raworth)



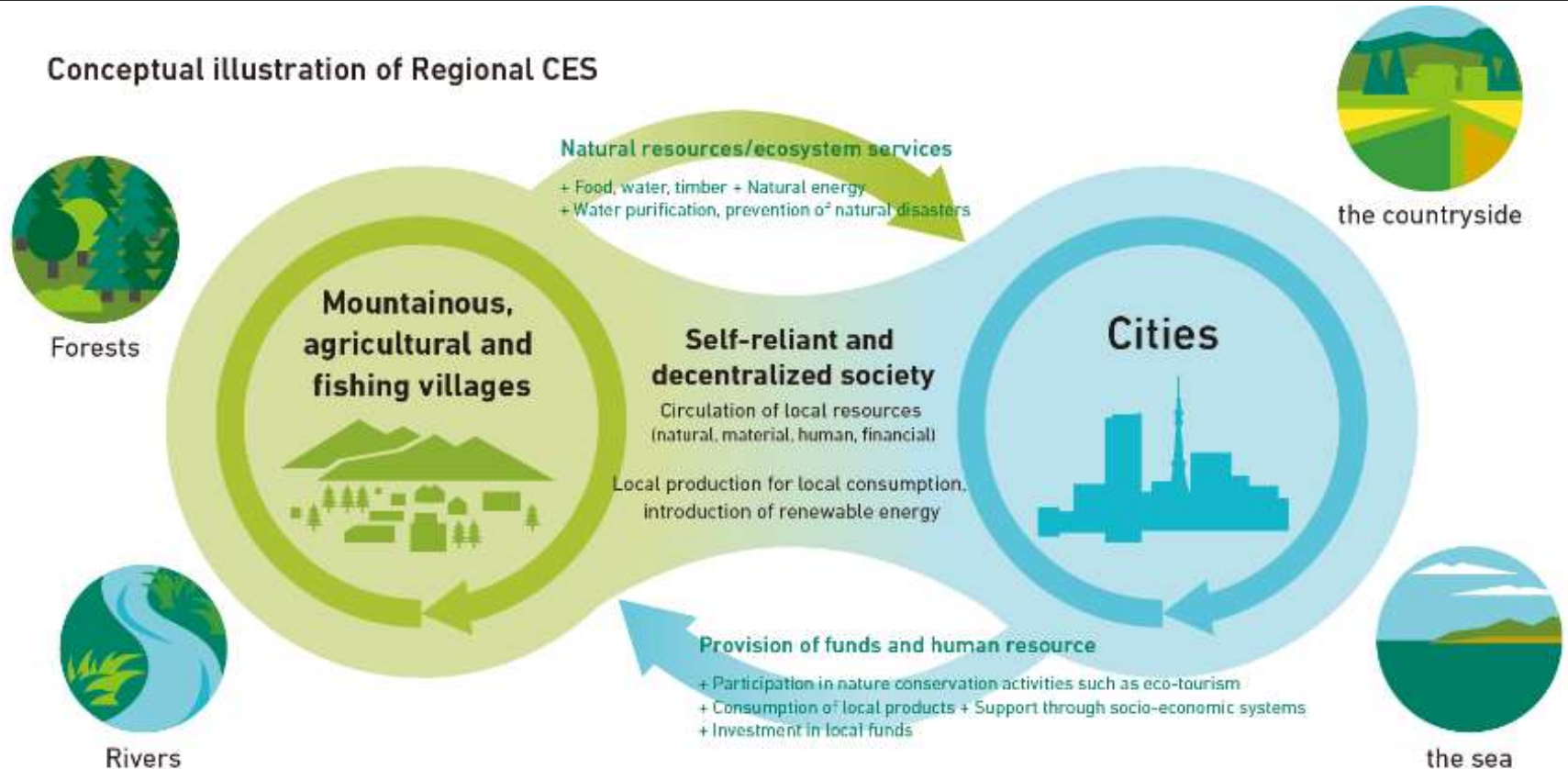
environmental, economic, and social issues are indivisible

The key to achieving "Integrated Improvements on Environment, Economy, and Society"

1. form a **self-reliant and decentralised society** in line with local needs
2. have various elements complement each other among neighbouring communities making **the sustainable use of available regional resources.**

Regional Circular & Ecological Sphere (Regional CES)

Each region demonstrates its strengths by utilizing its unique characteristics, thereby building a **self-reliant and decentralized society** where different resources are circulated within each region, leading to symbiosis and exchange with neighboring regions according to the unique characteristics of each region.



Regional Circular & Ecological Sphere (Regional CES)

- Importance of **promoting carbon and resource circulation on optimal scales** according to the characteristics of the regions concerned, and the nature of resources to be recycled.

Resources suitable for circulation in a small area  circulated in the smallest zone possible

Resources suitable for circulation in a larger area  circulated in a much more expanded area.

- It could be applied to small areas at the **community or municipal level** in certain cases, but may be appropriately applied on a much larger scale such as **a river basin, or a prefecture, or a country**, or even **across a region**.
- In Japan, we already started implementing the Regional CES concept under the SDG Future City initiative (2018) which covers 29 cities.

<Important>

Multi-stakeholder Partnerships, including the central and local governments, private sectors, academia, and civil society actors.

Thank you for your attention!!