



PARIS' CLIMATE ACTIONS PLAN



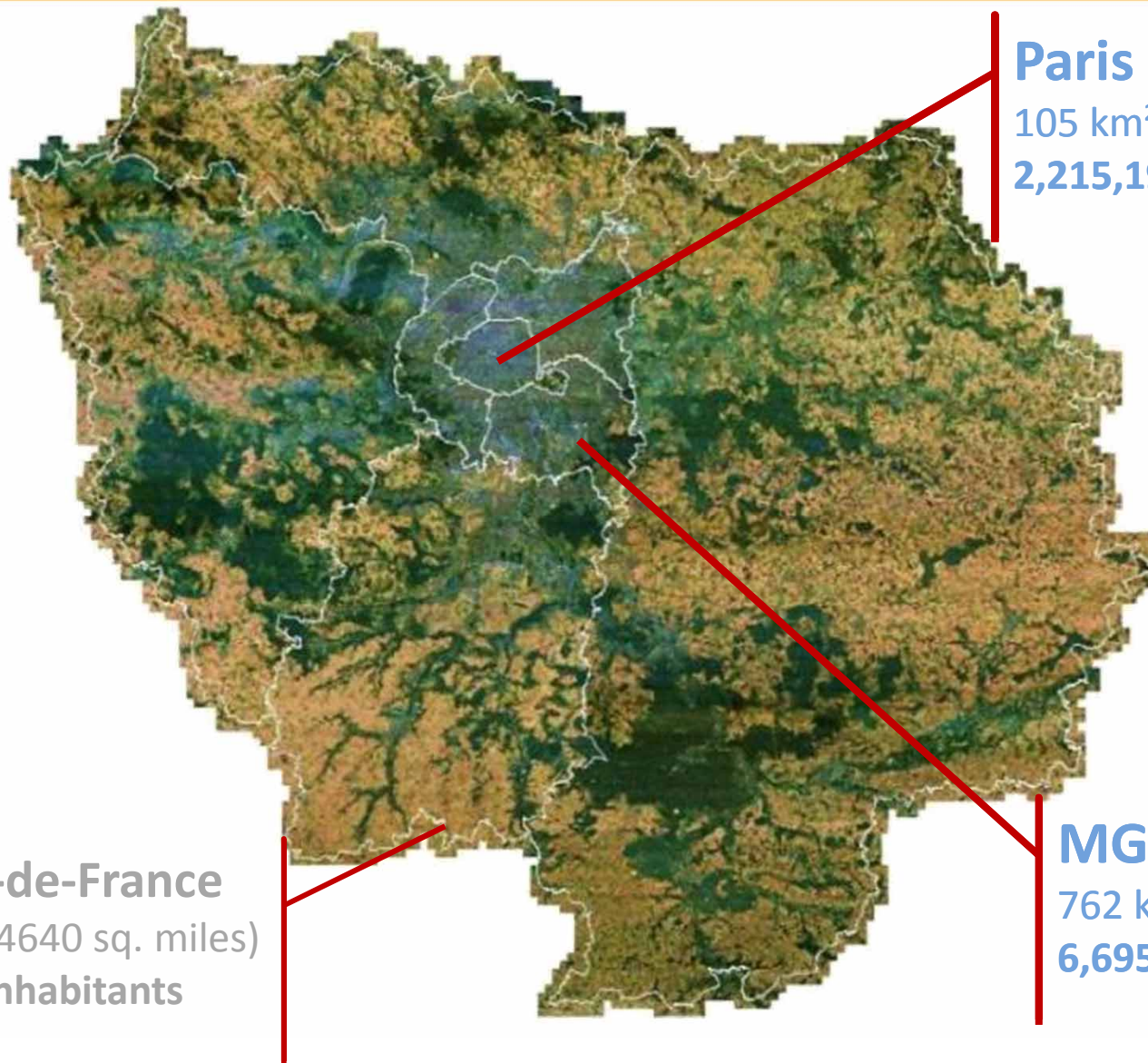
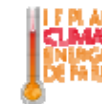
JAPAN
PAVILION
Start OUR Story



Paris Climate Actions Plan *A comprehensive low carbon strategy*



Paris & its region



Paris

105 km² (40.5 sq. miles)
2,215,197 inhabitants

MGP

762 km² (295 sq. miles)
6,695,236 habitants

Region Île-de-France

12,012 km² (4640 sq. miles)
11,746,000 inhabitants



The City of Paris: figures



- Land area: 105 km² (40.5 sq. miles)
- Height : 26 m
- River: the Seine
- Woods and gardens : 2,600 ha
- Minimum mean temperature: 2-6°C (35/43°F)
 - coldest record: -15°C (5°F) in November
- Maximum mean temperature: 12-26°C (54/81°F)
 - warmest record: +40.7°C (117°F) in August

- Mayor: Mrs Hidalgo
- 21 Deputy Mayors
- 163 city councillors
- 20 divisions with local mayor
- 121 neighbourhood councils

- 2,268,313 inhabitants
 - 21,602 inhab/km²
- 1,805,000 jobs
 - 8,4% unemployment
- 1,322,000 dwellings
 - 220,000 council housings
- 474,000 enterprises
- 26,000,000 tourists
- 200,000 pupils; 300,000 students
- GDP : 135 billion€
 - GDP/capita : 62,410 €

- 6,000 streets = 1,700 km
 - 2.7 million car commutes/day
- 360 metro stations, 60 bus lines
 - 3 billion trips a year
- 15,000 cabs
- 2,000 tourist coaches/day






- Waste : 1,200,000 t/year
- Water : 550,000 m³/day
- Energy : 31,500 TWh/year



1st Climate Actions Plan of Paris - commitments



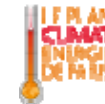
adopted unanimously 1st October 2007 and 11th December 2012

-  **-75%** GHG emissions by 2050 compare to 2004
-  **-25%** GHG emissions by 2020 compare to 2004
-  **-25%** energy consumption by 2020 compare to 2004
-  **25%** of renewable energies in the supply mix by 2020
-  **Adapt** Paris to climate change and resources scarcity





URBAN PLANNING FOR ENERGY EFFICIENCY



▲ 10% of Paris on high energy performances

.....
▲ + 40,000 m² of photovoltaic

.....
▲ Creation of solar potential map on Internet

.....
▲ 16,000 flats connected to a geothermal plant

.....
▲ Inject heat from data centers to district heating network



To zero carbon new areas





LOW ENERGY AND AFFORDABLE HOUSING



- ▲ Housing Improvement Operation on 2 districts of Paris: 410,000 inhabitants
-
- ▲ 35,000 social housing units retrofitted
-
- ▲ New council housing labelled *BBC-Effinergie+*: -50 GWh/year
-
- ▲ A specific **Housing Roadmap** written with all stakeholders
-
- ▲ Tackle energy poverty
-



-15% energy consumption since 2004



THE TERTIARY SECTOR IN PARIS, A NEW CHALLENGE



▲ Bind the tertiary actors by signing a partnership contract (750,000 tCO₂e avoided)

.....
▲ 50 kWh/m²/year for the new offices

.....
▲ Support of 250 hotels for a sustainable tourism in Paris

.....
▲ 7,000 additional rooms by 2020 respecting the climate action plan

.....
▲ Create the "PASS Entreprises" allowing easier access to Velib' and Autolib' in the professional context

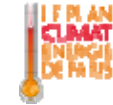


-13% energy consumption since 2004





TOWARDS AIR QUALITY AND CLIMATE-FRIENDLY MOBILITIES



Public transports

- Extension of automatic metro line to suburbs
- +4km of circular Tramway by 2017
- New express transit train from region

Urban logistics

- 26,000 m² logistics space at Chapelle Internationale
- Freight-stations at Clichy-Batignolles and Bercy-Charenton
- Growth of the ports of Gros Caillou and Austerlitz



-39% GHG emission for inner-transport



TOWARDS SUSTAINABLE CONSUMPTION, LESS WASTE-GENERATING



▲ Decrease by **31 additional kg** waste production per inhabitant between 2009 and 2015

.....
▲ Decrease **food waste**

.....
▲ **1st organic** public purchaser

.....
▲ Open the **1st méthanation centres**

.....
▲ Exploitation of the **non drinkable water network**



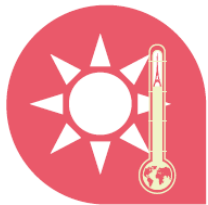
-13% GHG emission for waste



Paris future weather



By 2050-2070



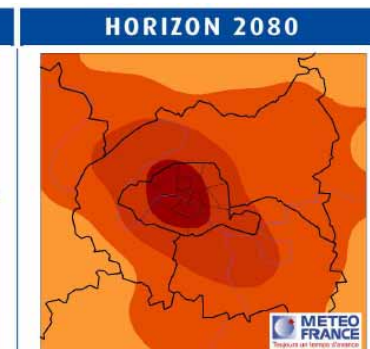
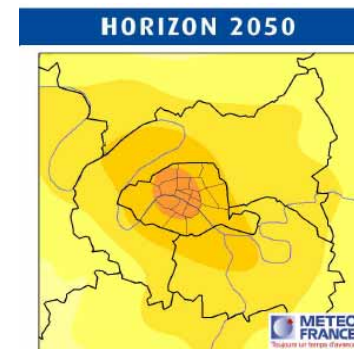
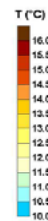
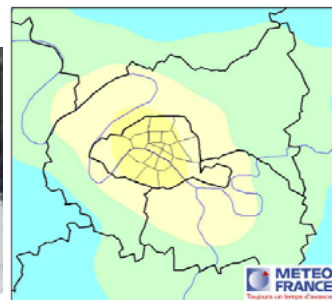
- +2 to 4°C
- 10 to 25 days/y above 32°C

Heat waves and droughts more common and intense

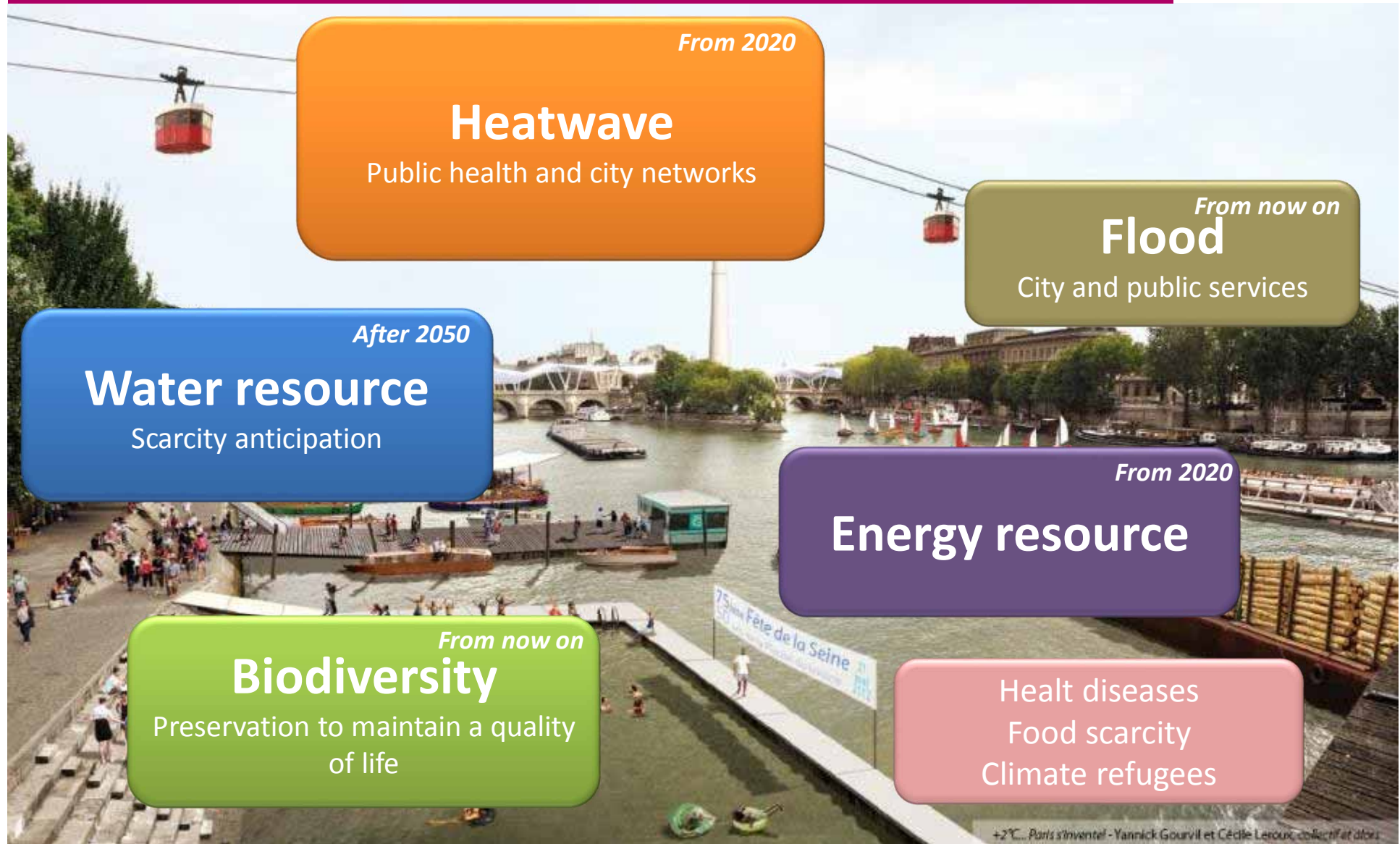
Heavy rains more frequent than now

Winters may remain **cold**

Uncertainty about storms and sunshine



AN ADAPTATION STRATEGY



Paris adaptation strategy : 4 pillars, 35 actions



- **Protecting Parisians** against extreme climate events
- **Ensuring** water, energy and food **supply**
- **An adapt urban planning** sustainable management
- **Accompany new lifestyles** and reinforce solidarity



Climate Action Plan : a comprehensive strategy



URBAN PLANNING FOR ENERGY EFFICIENCY

10% of Paris on high energy performances



LOW ENERGY AND AFFORDABLE HOUSING

35,000 social housing units retrofitted



THE TERTIARY SECTOR IN PARIS, A NEW CHALLENGE

Partnership contract with 39 major enterprises : 750,000 tCO₂e avoided



TOWARDS AIR QUALITY AND CLIMATE-FRIENDLY MOBILITIES

-39% of GHG emissions by 10y, NO diesel inside Paris by 2020



TOWARDS SUSTAINABLE CONSUMPTION, LESS WASTE-

Decrease food waste and open 1st methanisation center



AN ADAPTATION STRATEGY

Greening Paris for reducing impact of Urban Heat Island

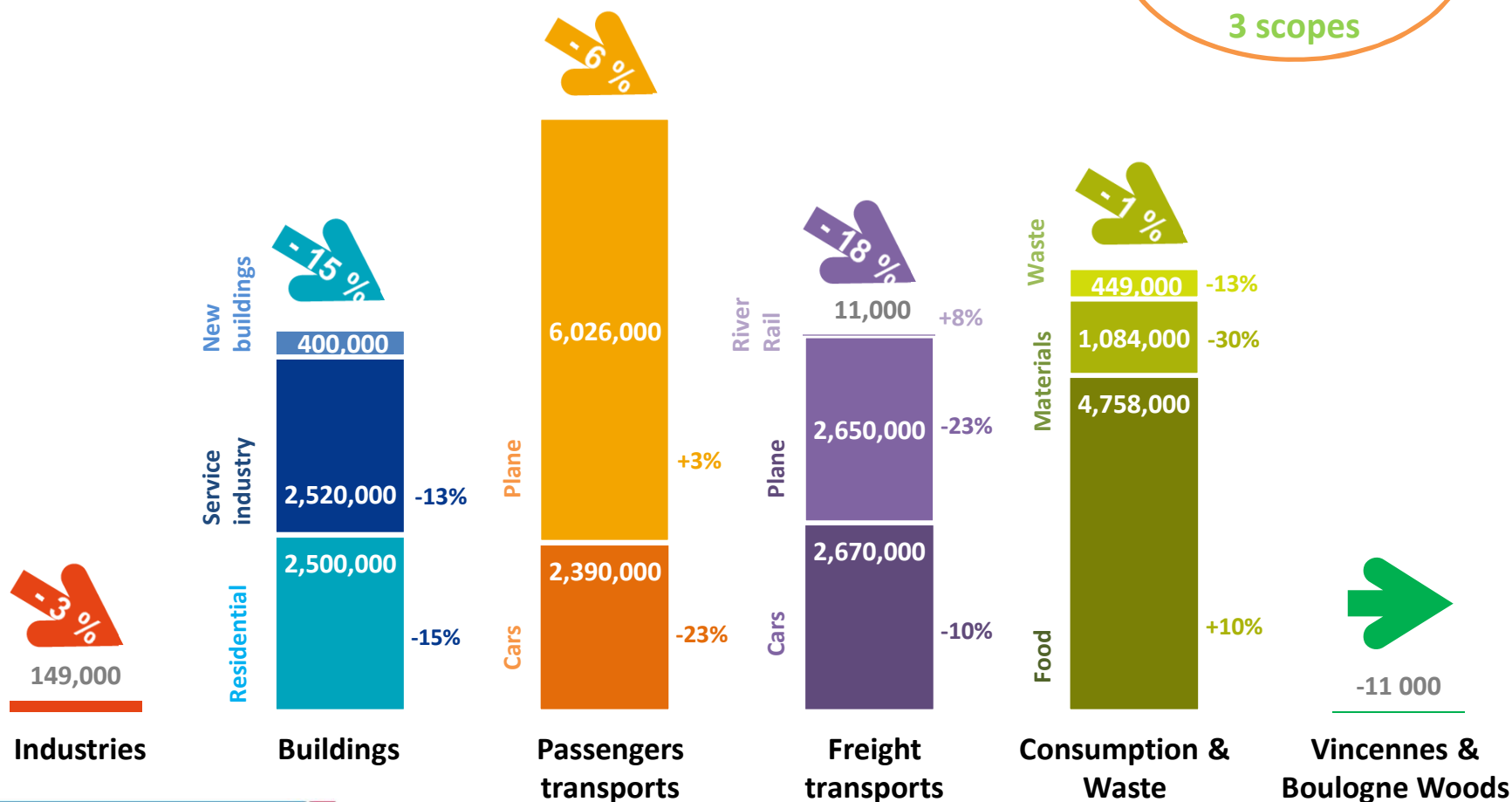
Bilan Carbone[®] de Paris – 2014



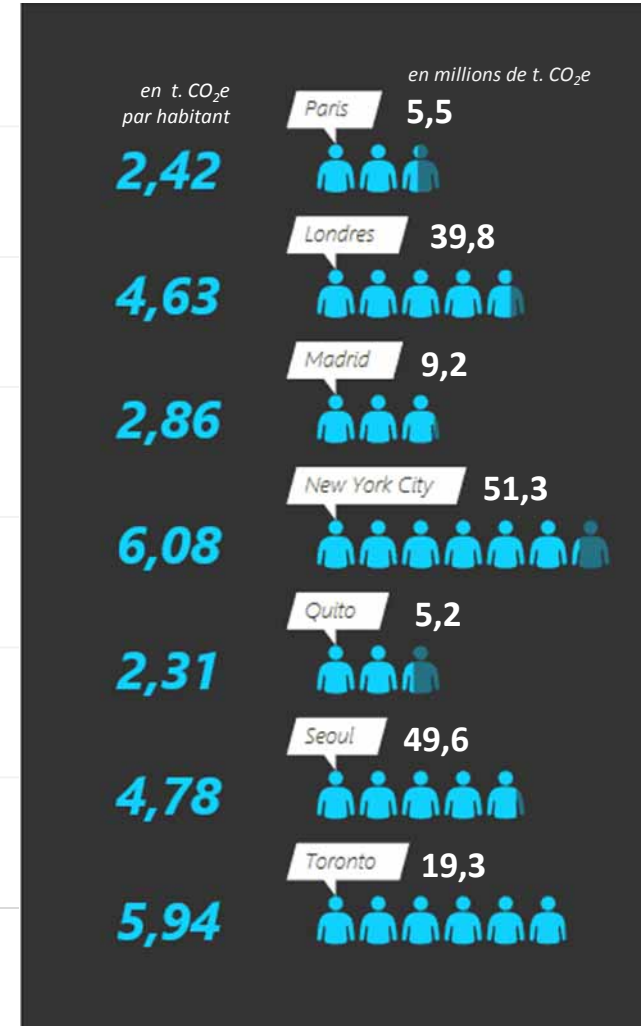
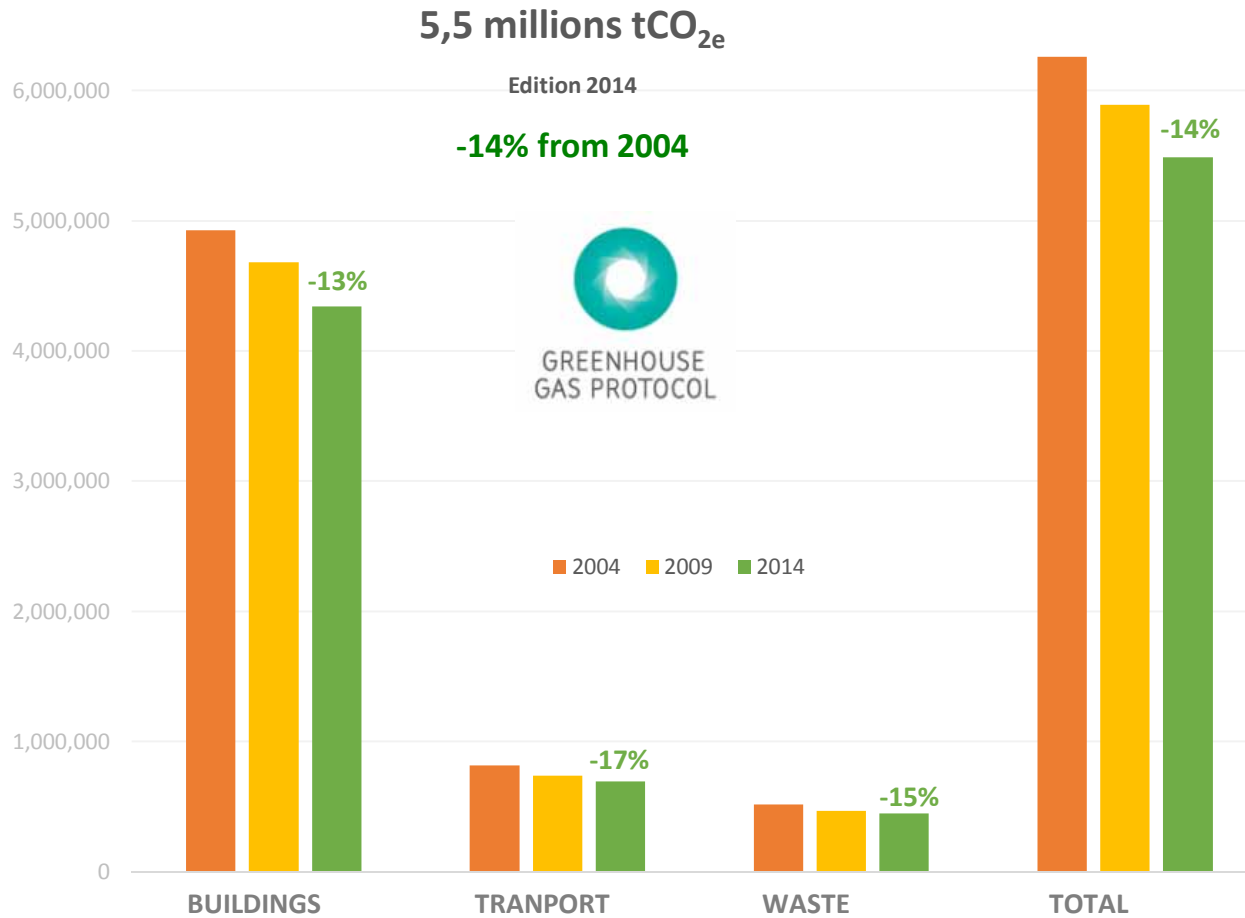
BILAN CARBONE[®] OF PARIS
2014

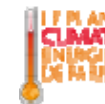
25,6 millions tons of CO_{2eq}

-9,2 %
from 2004
3 scopes

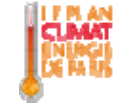


Paris GHG Inventory – Global Protocol for the Community





And now how to be neutral ?

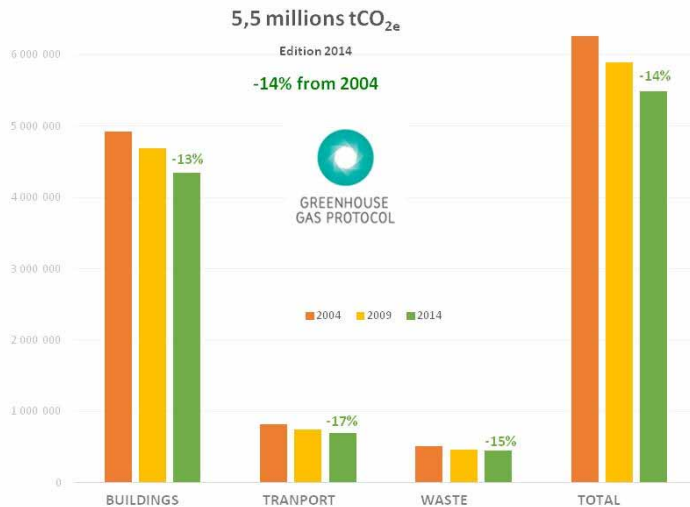
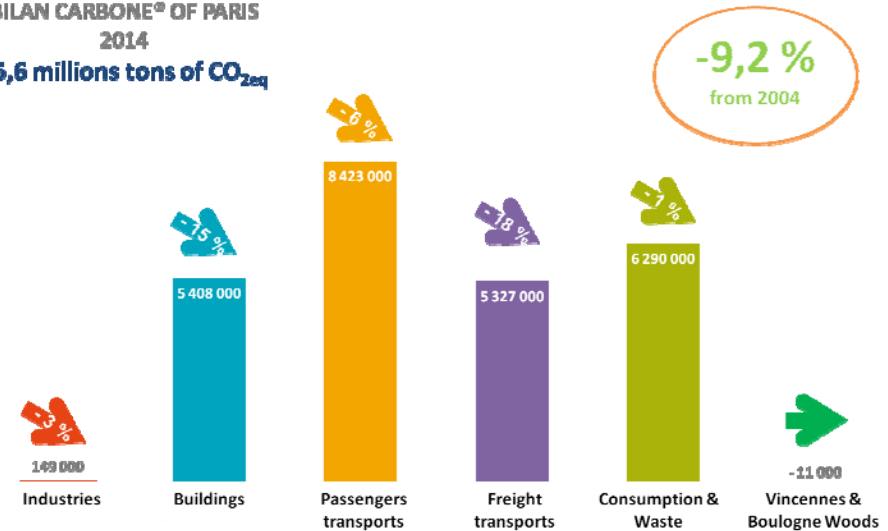


Zero CO₂ emission on ?

Which scope ?

Which trends ?

BILAN CARBONE[®] OF PARIS
2014
25,6 millions tons of CO₂eq



Which society ?

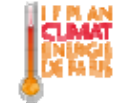
How to be

livable, inclusive, resilient,

carbon neutral city ?



Now it's your turn, Are you ready ?



<http://climway.paris.fr>



Merci !

Thank You !

ありがとう

PARIS' CLIMATE ACTIONS PLAN

Yann Françoise

planclimatdeparis @paris.fr

<http://www.planclimat.paris.fr/>

