



# *Linkage of JCM to Indonesia INDC*

**Dr. Medrilzam**

*Deputy Director for Forest Economy and Management*

*Ministry of National Development Planning/*

*National Development Planning Board (BAPPENAS)*

Presented at COP 21 UNFCCC, Paris, at the Session  
Seminar on Capacity Development Activities for Low Carbon Development between  
Indonesia and Japan (through Joint Crediting Mechanism)  
December 4th, 2015 (17:15-18:45) at Japan Pavilion, COP 21 venue in Paris, France.

# Indonesia Emission Reduction Target in 2030



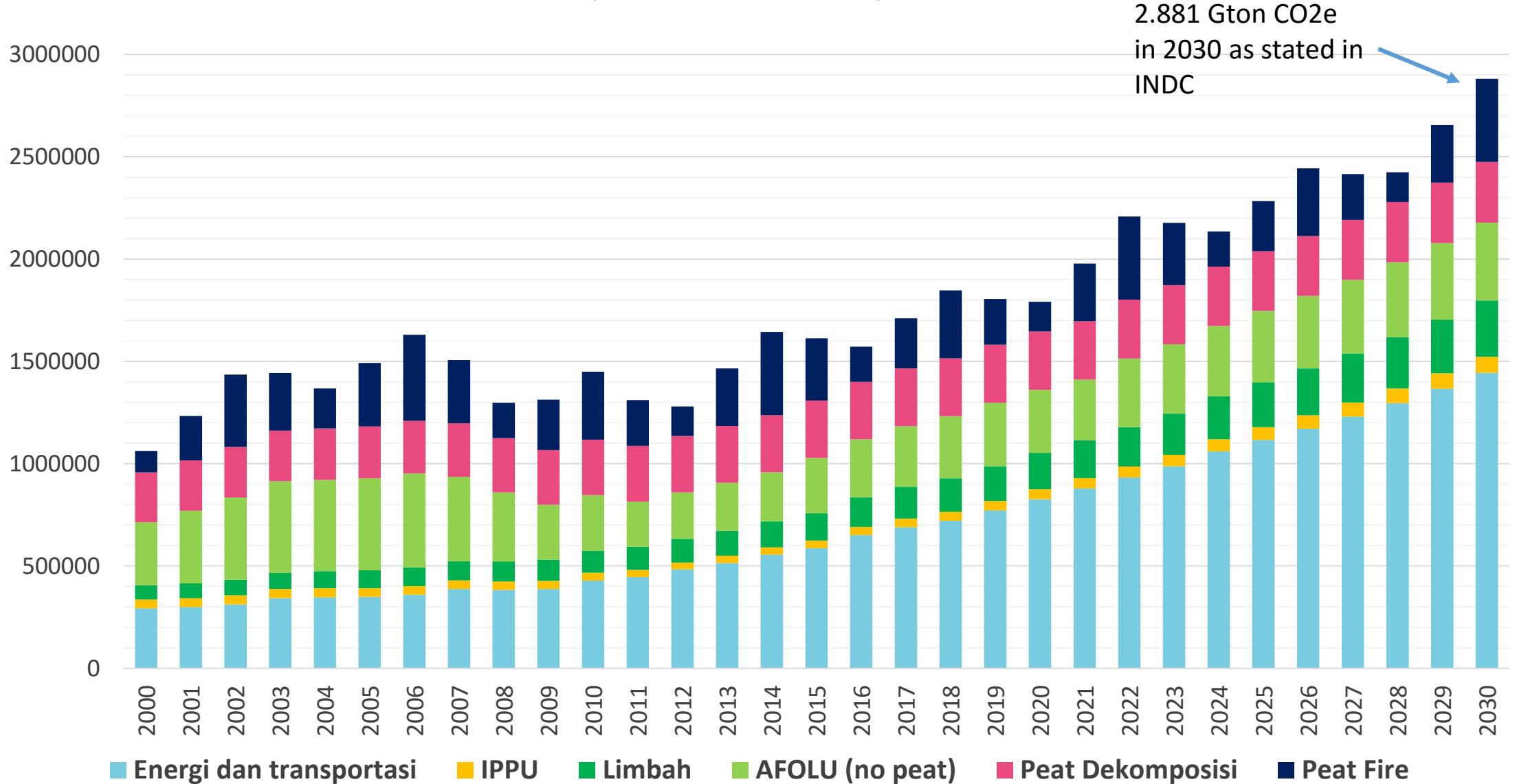
## UNCONDITIONALITIES

As stated earlier, Indonesia is committed to reducing emissions by 29% compared to the business as usual (BAU) scenario by 2030, as a fair reduction target scenario based on the country's most recent assessment of the 2010's National Action Plan on GHG Reduction. The BAU scenario is projected approximately 2,881 GtCO<sub>2</sub>e in 2030.

## CONDITIONALITIES:

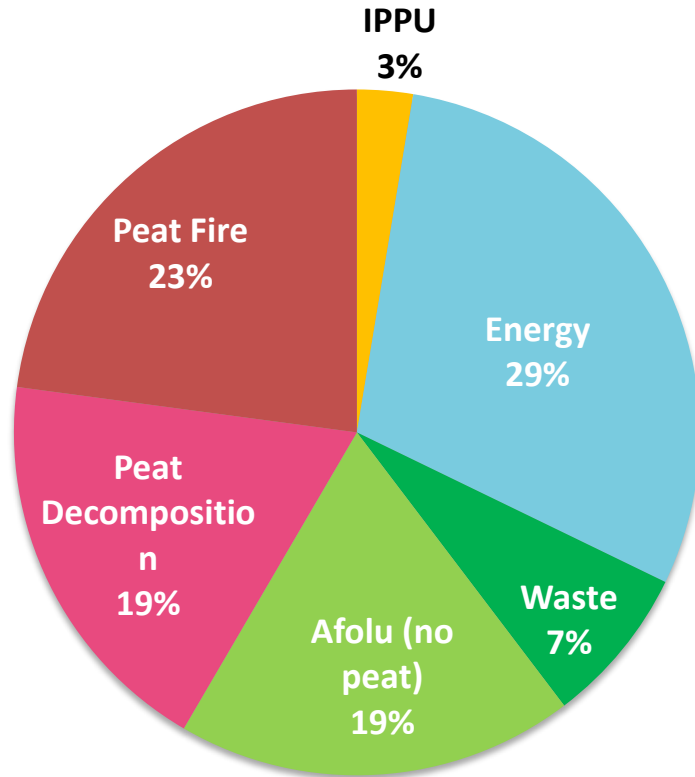
As articulated in the aforementioned Unconditional Reduction Indonesia's target should encourage support from international cooperation, which is expected to help Indonesia to increase its contribution up to 41% reduction in emissions by 2030.

## Indonesia Emission Baseline: 2000-2030 (Result of RAN GRK Review) (thousands ton CO<sub>2</sub>e)

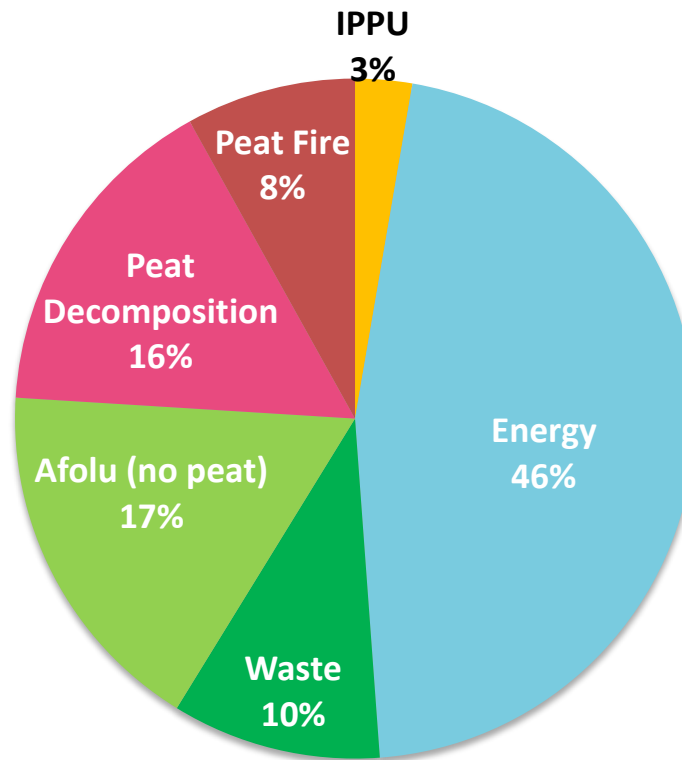


# SHIFT OF EMISSION SOURCES

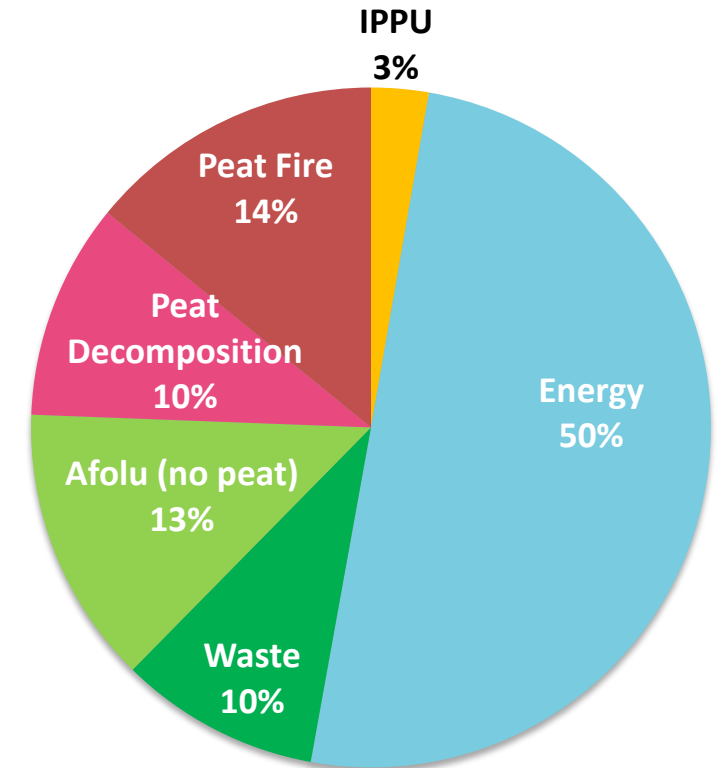
Share Baseline Emission in 2010



Share Baseline Emission in 2020



Share Baseline Emission in 2030

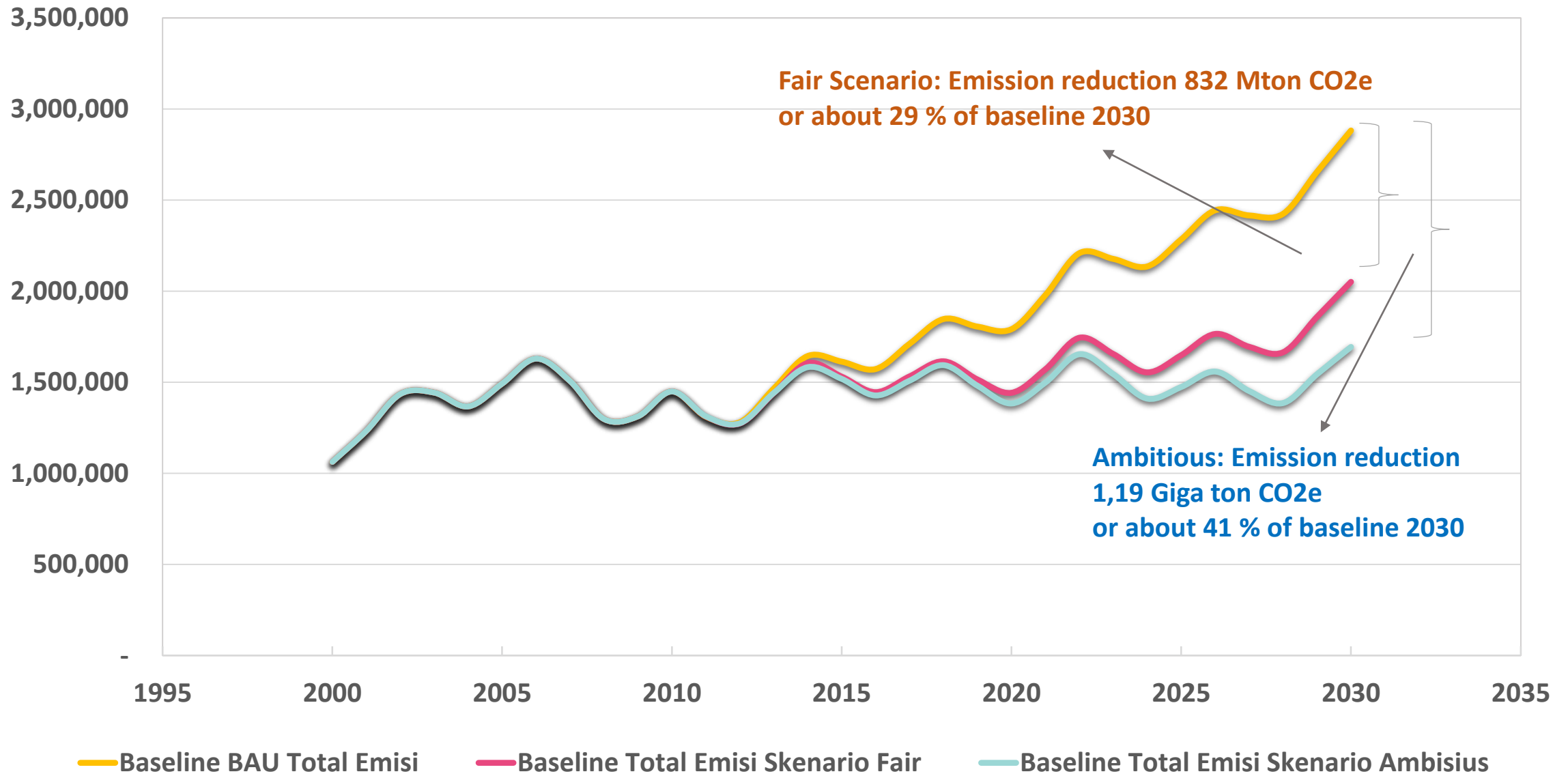


Emission from energy sector will supersede the land based emission in the future → indicate that Indonesia economy will move toward industrial countries.

# Policy exercises based on: RPJMN 2015-2019 and 2 Policies Scenarios (Fair and Ambitious) for 2020-2030

SEKTOR	MEASURES
1. LAND BASED (FOREST, PEAT AND AGRICULTURES)	<ul style="list-style-type: none"> <li>• Forest fire prevention measures</li> <li>• Tree planting program</li> <li>• Moratorium issuing any new permits in primary forest and peatland areas, which covers 34% of Indonesian territory.</li> <li>• More stringent regulations and enforcement actions to reduce peat fires and the subsequent conversion of peatlands to agriculture uses</li> <li>• Sustainable agriculture practices</li> </ul>
2. ENERGY BASED (TRANSPORTATION AND ENERGY)	<ul style="list-style-type: none"> <li>• Clean coal technology</li> <li>• Increase of the use of gas powered generation</li> <li>• Renewable energy goals</li> <li>• Energy intensity to improve by 1% per year</li> <li>• A reduction in fossil fuel subsidies</li> <li>• Public transport measures</li> <li>• Efficiency standards for automobiles to reflect world standards</li> <li>• Fuel-switching from gasoline to natural gas/CNG (the cooperation between Min of Transport, Min of Industry, MEMR)</li> <li>• Biofuel use will be increased in diesel fuel and in gasoline</li> </ul>
3. IPPU	optimum ratio for clinker in the cement industry
4. WASTE	Methane capture from landfills in urban area by 2030 and the adoption of better waste management practices.

# Baseline Emission Indonesia vs RPJMN+2 Policy Scenarios (in 000 ton CO<sub>2</sub>e)



## Indonesia commitment to various sources of financing in INDC:



.... Indonesia's additional 12% of intended contribution by 2030 is subject to provision in the global agreement including through bilateral cooperations, covering technology/ deployment and transfer, capacity building, payment for performance mechanisms, technical cooperation and access to financial resources.

.... Indonesia will meet its unconditional commitments regardless of the existence of international market mechanisms. **Indonesia welcomes bilateral, regional and international market mechanisms** that **facilitate and expedite technology development and transfer, payment for performance, technical cooperation, and access to financial resources** to support Indonesia's climate mitigation and adaptation efforts toward a climate resilient future.







# Thank you for your attention

Further Contact:

Dr. Medrilzam

[Medrilzam.Medrilzam@gmail.com](mailto:Medrilzam.Medrilzam@gmail.com)

[medril@bappenas.go.id](mailto:medril@bappenas.go.id)

