

# REDD+ Readiness of Lao PDR and Expectation and Challenges for Public-Private Partnership

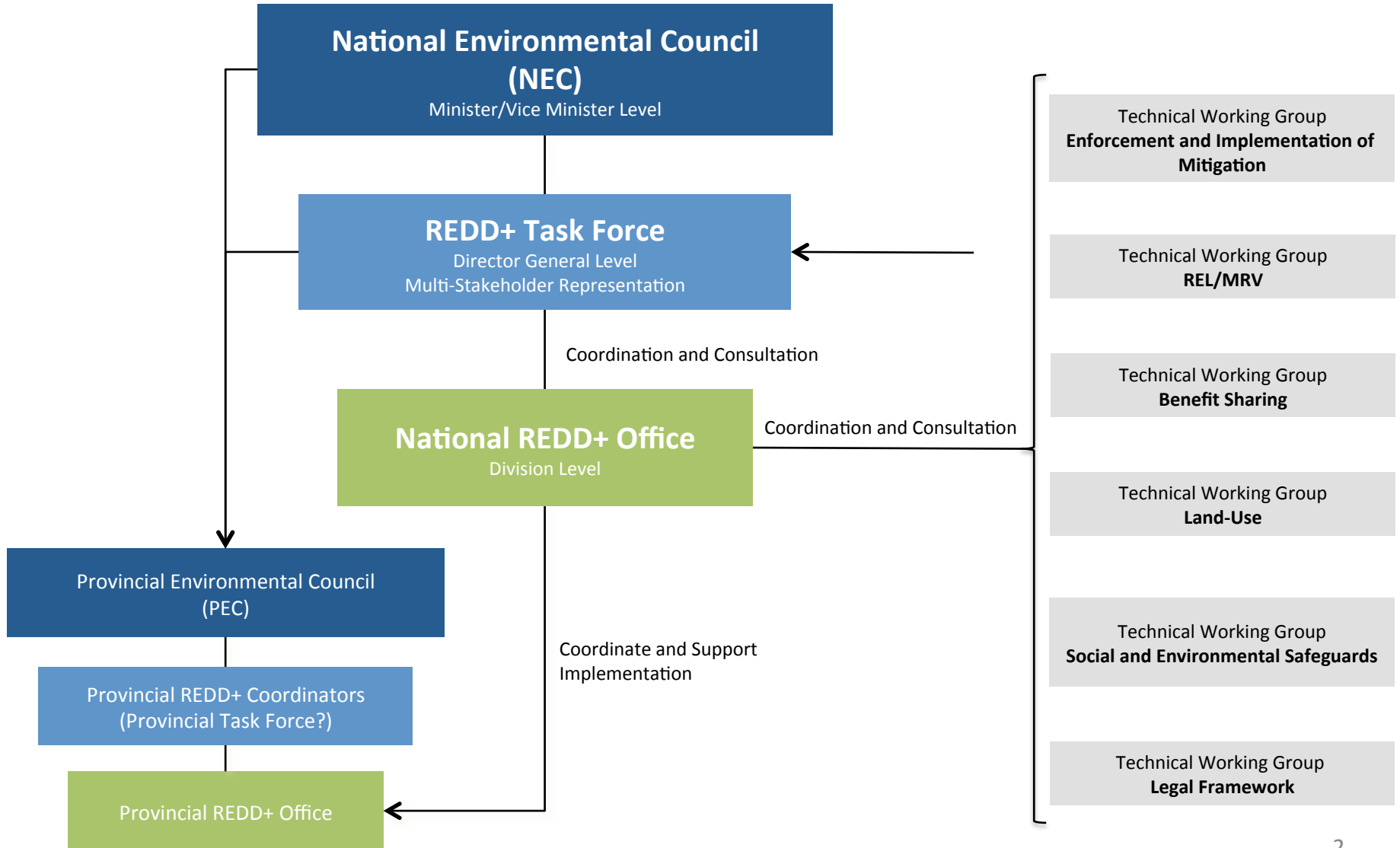
UNFCCC COP21 Japan Pavilion Side Event  
“Efforts by Japan’s Public Private Partnership toward REDD+ Initiative”  
December 1<sup>st</sup>, 2015      Paris, France

Dr. Inthavy Akkharath  
Deputy Director General  
Department of Forest Resource Management  
Ministry of Natural Resource and Environment



# 1. Status of REDD+ Readiness Preparation

## Institutional Set-Up



# 1. Status of REDD+ Readiness Preparation

## Institutional History

- In 2013 responsibility for REDD+ was officially transferred from DoF (MAF) to DFRM (MoNRE) (Decision 0052/MAF)
- Key 2015 Tasks
  1. ToR of National REDD+ Task Force; Done
  2. ToR – National REDD+ Office; Done
  3. Establishment and functioning of 6 Technical Working Groups; Done and started
  4. Development Roadmap of Key REDD+ Elements (National REDD+ Strategy, REL/RL, NFMS, SIS and BSS); On-going
  5. Intended Nationally Determined Contribution to UNFCCC; Submitted

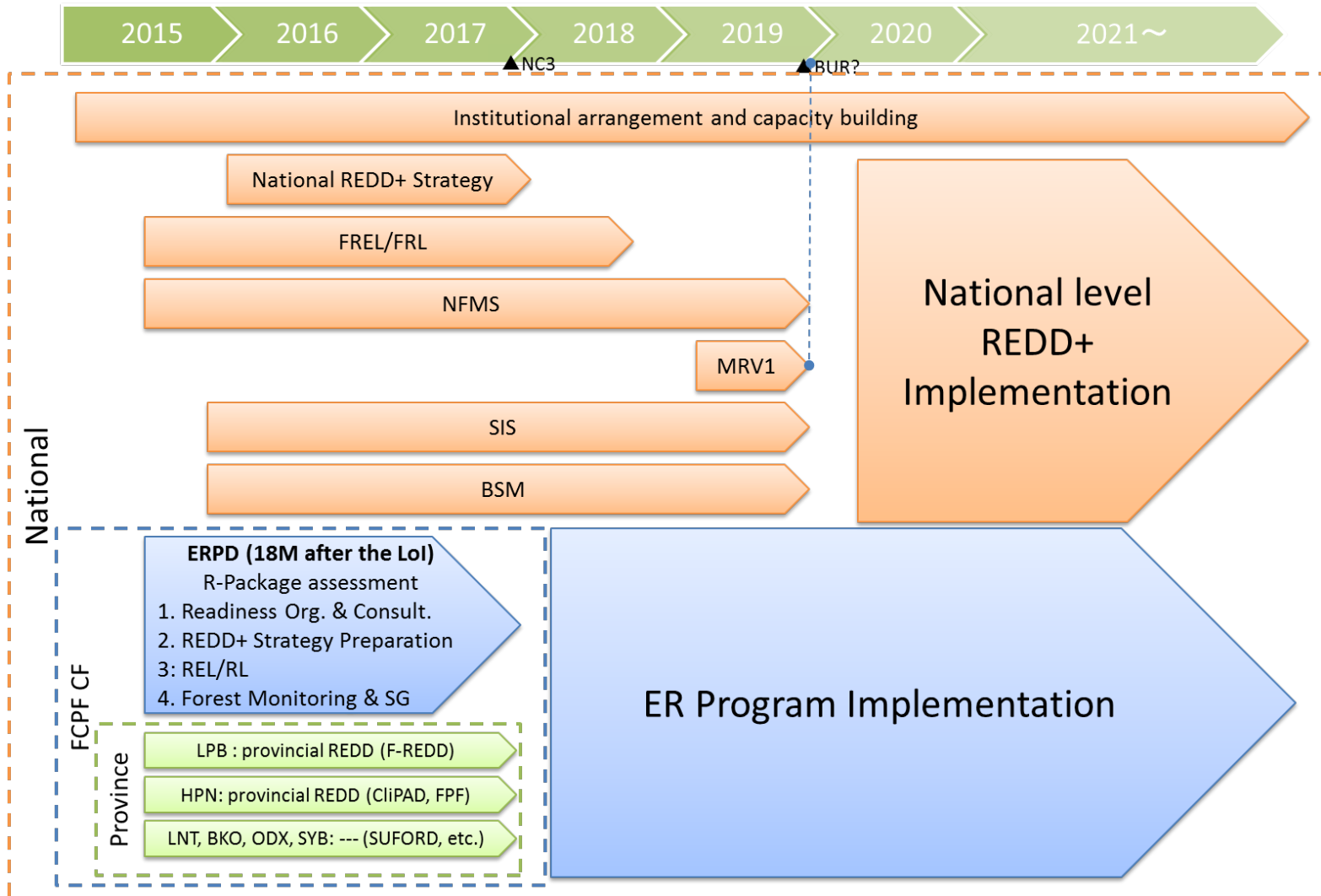
# 1. Status of REDD+ Readiness Preparation

## Policy History

- Forest Strategy 2020 (FS2020) adopted in 2005
- National Climate Change Strategy formulated in 2010
- FCPF R-PP approved in 2010 and later updated to reflect major institutional changes (MoNRE)
- Lao PDR accepted into the FCPF Carbon Fund pipeline (2015.10)
- National Forest Law is currently under revision and will incorporate provisions for REDD+.
- Standing policies on Safeguards include:
  - Environmental Protection Law (No. 02-99/NA 3 April 1999)
  - Decree on Environmental Impact Assessments (112/PM February 2010)
  - Regulation on Environmental Assessments in the Lao PDR (No. 1770/STEA Vientiane, October 2000)

# 1. Status of REDD+ Readiness Preparation

## Road Map for REDD+ (tentative)

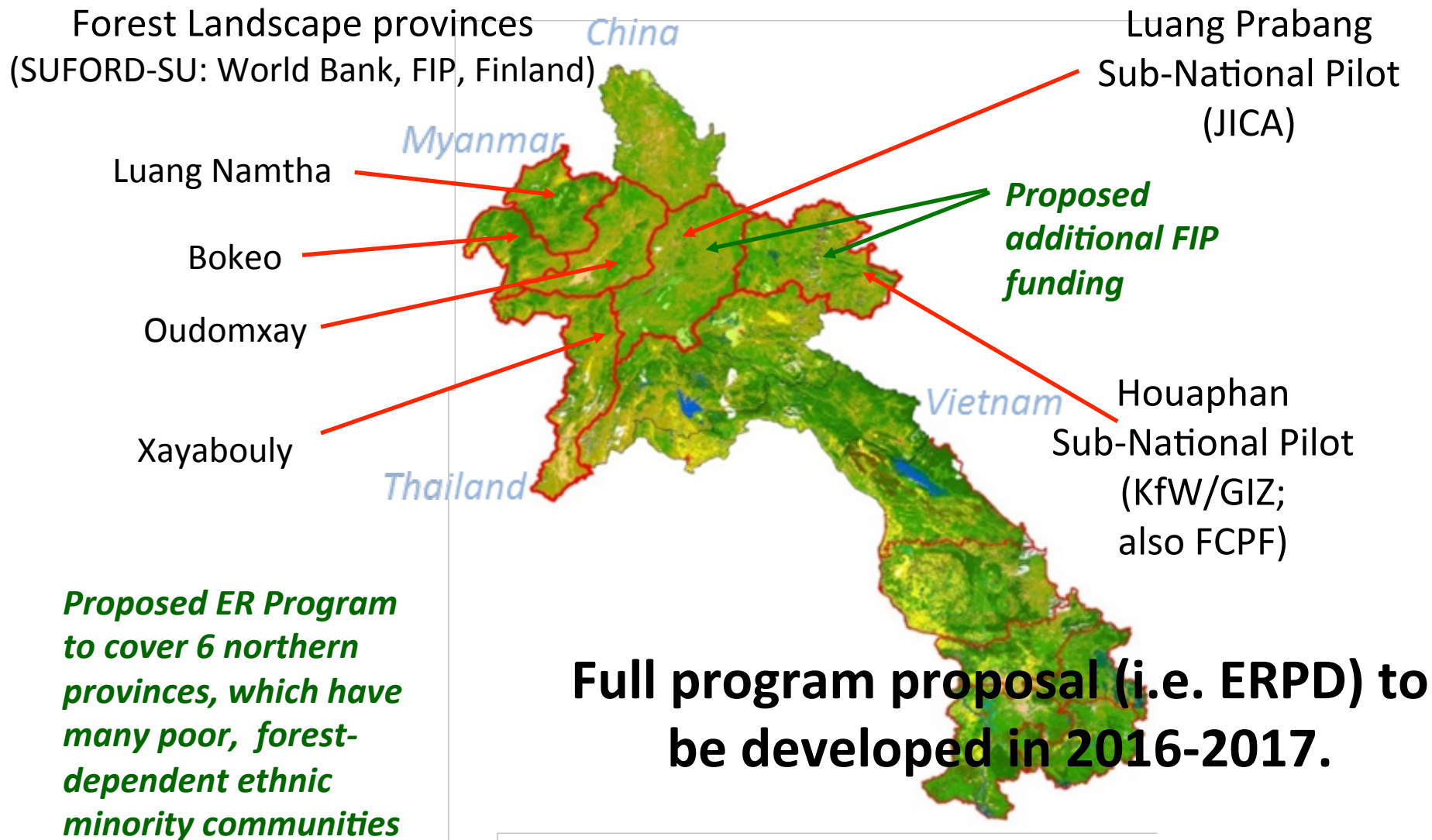


# 1. Status of REDD+ Readiness Preparation

## Main REDD+ Projects/Programs

Project	Donor	Focus	Scope	
CLIPAD	KfW/GIZ	Sub National Piloting	Houaphan Province	Subnational Piloting
PAREDD	JICA	Sub National Piloting	Luang Prabang Province	
SUFORD-SU	WB/FIP Finland	Sustainable Forest Management in Production Forests, Forest Landscapes, Village Forestry, monitoring	13 of 17 rural Provinces	Mitigation And Enhancement
Lao Forest Investment Plan (FIP Laos)	FIP/WB/ADB/IFC	3 projects: SUFORD-SU (WB); smallholder plantations (IFC); ecosystem services (ADB)	Multiple provinces	
FLEGT	European Union/ GIZ	Law Enforcement	Multiple Provinces	
LEAF	USAID/SNV	REDD+ Technical Inputs	Multiple Provinces	
ENRICH	SNV	Carbon Stock Enhancements	Faculty of Forestry	
FPREP	JICA	Forestry Policies and Capacities	National Level	REDD+ Technical Systems and Policy
NFIS	JICA	Mapping and Biomass Assessment at National Level	Country-wide	
FIM/FPP	JICA	Capacity building ; facilities, equipment	Country-wide	
Project Level Activities	RECOFTC, WWF, SNV,WCS	Various activities, NGO and private.	Multiple Locations	

## 2. Access to Result-Based Payment Scheme: FCPF Carbon Fund



# 3. Access to results-based Payment scheme; JCM-REDD+

## 1. Status of JCM

7<sup>th</sup> Aug 2013: Signing of “BILATERAL COOPERATION ON THE JOINT CREDITING MECHANISM FOR THE LOW CARBON GROWTH PARTNERSHIP BETWEEN JAPAN AND THE LAO PEOPLE'S DEMOCRATIC REPUBLIC”

- 16<sup>th</sup> May 2014: 1<sup>st</sup> Meeting of Joint Committee of the Joint Crediting Mechanism between the Lao PDR and Japan adopted
- "Rules of Implementation for the Joint Crediting Mechanism" and "Joint Crediting Mechanism Rules of Procedures for the Joint Committee“
- “Joint Crediting Mechanism Project Cycle Procedure” and ten (10) forms related to the procedure
- REDD+ included in the sectoral scope



# 3. Access to results-based Payment scheme; JCM-REDD+

## 2. Status of potential JCM-REDD+ Project in Laos

- Development Study by Japanese investors at Houayking Village Cluster in Luangprabang Province in 2014-15.
- HK cluster has been a field site of JICA's PAREDD Project and draft Project Description for VCS validation was prepared including biomass survey.
- The potential site is about 30,000 ha and the DS report concludes possible credits of 120,000 tCO<sub>2</sub> per year.
- Funding for field activities approved for 2015-16 by Ministry of Environment, Japan.

# 3. Access to results-based Payment scheme; JCM-REDD+

## 3. Expectations

- 1) Early transition to internationally or bilaterally tradable credits.
  - 2) Lessons of Public Private Partnership REDD+ project; only one REDD+ project with private investment under Gov.-to-Gov. scheme.
  - 3) Lessons from possible case of REDD+ project nested within a sub-national REDD+.
- Harmonization options
    - Separation of JCM area from CF area (separate accounting and payment).
    - Use of CF methodology (REL/RL and MRV) for JCM area for less direct and transaction costs (integrated accounting and separate crediting/payment).
  - Benefit sharing/use mechanism for Lao side stakeholders
    - Stand alone mechanism for JCM.
    - Integrated with payment from CF.

A scenic view of a mountain range with green hills and a valley, overlaid with the text "ຂອບໃຈ!" and "Thank You!". The landscape features rolling green hills in the foreground, a deep valley in the middle ground, and jagged mountain peaks in the background under a blue sky with light clouds. The text is centered in the upper half of the image.

ຂອບໃຈ!  
Thank You!